

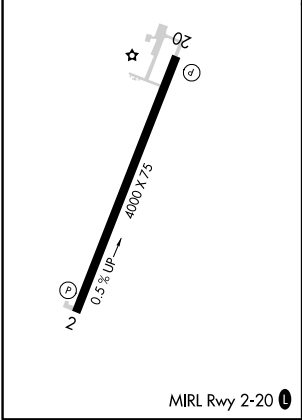
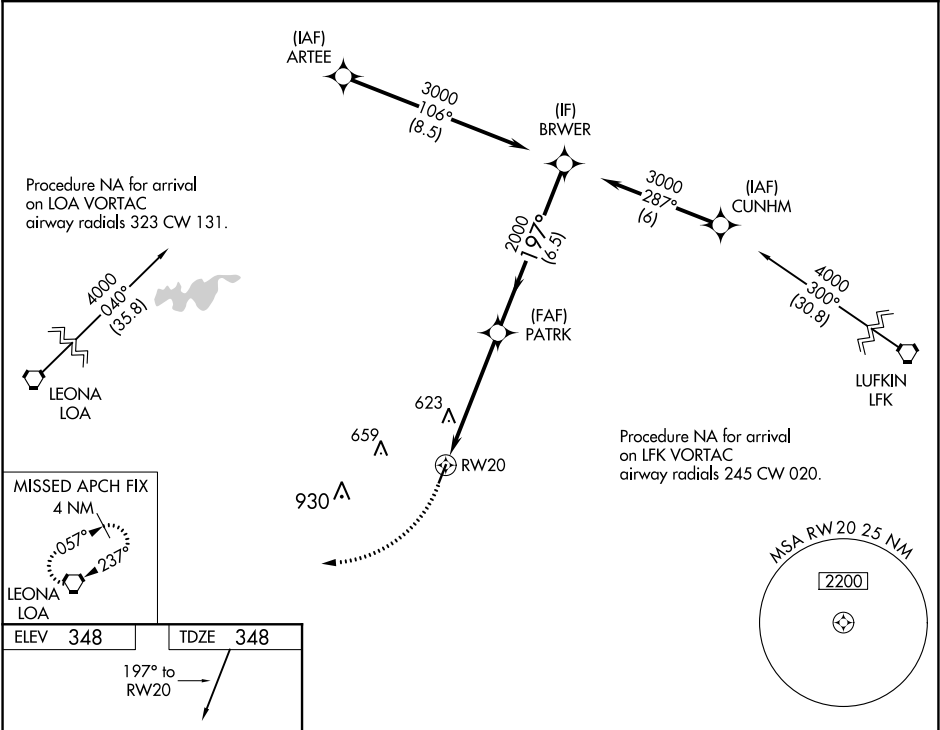





WAAS CH <b>65826</b> <b>W20A</b>	APP CRS <b>197°</b>	Rwy Idg TDZE Apt Elev	<b>4000</b> <b>348</b> <b>348</b>
--	------------------------	-----------------------------	---

RNAV (GPS) RWY 20  
HOUSTON COUNTY (DKR)

RNP APCH.	MISSED APPROACH: Climbing right turn to 4000 direct LOA VORTAC and hold.
 Procedure NA at night. Rwy 20 helicopter visibility reduction below 1 SM NA.	

AWOS-3 <b>118.775</b>	HOUSTON CENTER <b>134.8 269.6</b>	CTAF <b>122.9</b> 
--------------------------	--------------------------------------	--



4000	LOA	Visual Segment - Obstacles.			
					
		RW20		BRWR	
		PATRK		3000	
		2000			
		5.1 NM		6.5 NM	
CATEGORY	A	B	C	D	
LP MDA	880-1	532 (600-1)	NA		
LNAV MDA	900-1	552 (600-1)	NA		
 CIRCLING	900-1 552 (600-1)	980-1 632 (700-1)	NA		

SC-5, 31 DEC 2020 to 28 JAN 2021

SC-5, 31 DEC 2020 to 28 JAN 2021