

(BLTWY6.BLTWY) 19115
BLTWY SIX DEPARTURE (RNAV)

AL-10328 (FAA)

HOUSTON EXECUTIVE (TME)
HOUSTON, TEXAS

ATIS
119.525
CLNC DEL
132.075
EXECUTIVE TOWER ★
126.975 (CTAF)
HOUSTON DEP CON
123.8 257.7

TOP ALTITUDE:
ASSIGNED BY ATC

NOTE: RADAR required.
NOTE: DME/DME/IRU or GPS required.
NOTE: RNAV 1.

TAKEOFF MINIMUMS

Rwy 18, 36: Standard with minimum climb of
500' per NM to 680.

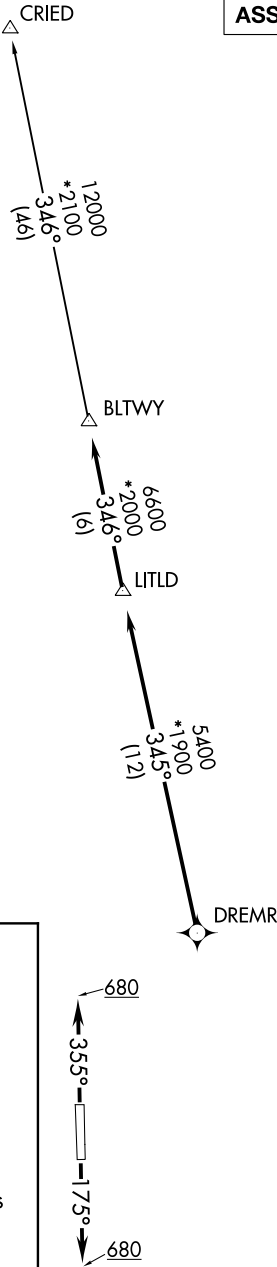
DEPARTURE ROUTE DESCRIPTION

TAKEOFF RWY 18: Climb heading 175° to 680
for RADAR vectors to DREMR, thence . . .

TAKEOFF RWY 36: Climb heading 355° to 680
for RADAR vectors to DREMR, thence . . .

...on track 345° to LITLD, then on track 346° to
BLTWY, then on (transition). Maintain ATC
assigned altitude. Expect filed altitude 10 minutes
after departure.

CRIED TRANSITION (BLTWY6.CRIED)



NOTE: Chart not to scale.