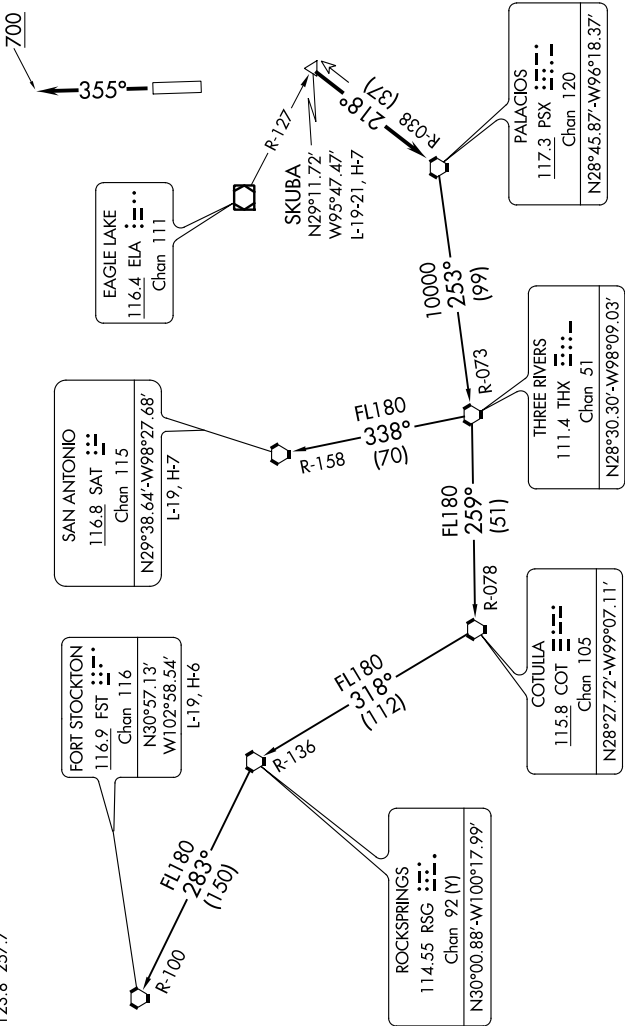


SC-5, 31 DEC 2020 to 28 JAN 2021

TOP ALTITUDE:
ASSIGNED BY ATC

TAKEOFF MINIMUMS
Rwy 18, 36: Standard.

ATIS
119.525
CLNC DEL
132.075
GND CON
132.075
EXECUTIVE TOWER ★
126.975 (CTAF)
HOUSTON DEP CON
123.8 257.7



(NARRATIVE ON FOLLOWING PAGE)

NOTE: RADAR required.
NOTE: Chart not to scale.

SC-5, 31 DEC 2020 to 28 JAN 2021