

WAAS CH 49004 W18A	APP CRS 175°	Rwy Idg 6610 TDZE 166 Apt Elev 166
--	------------------------	---

RNAV (GPS) RWY 18

HOUSTON EXECUTIVE (TME)

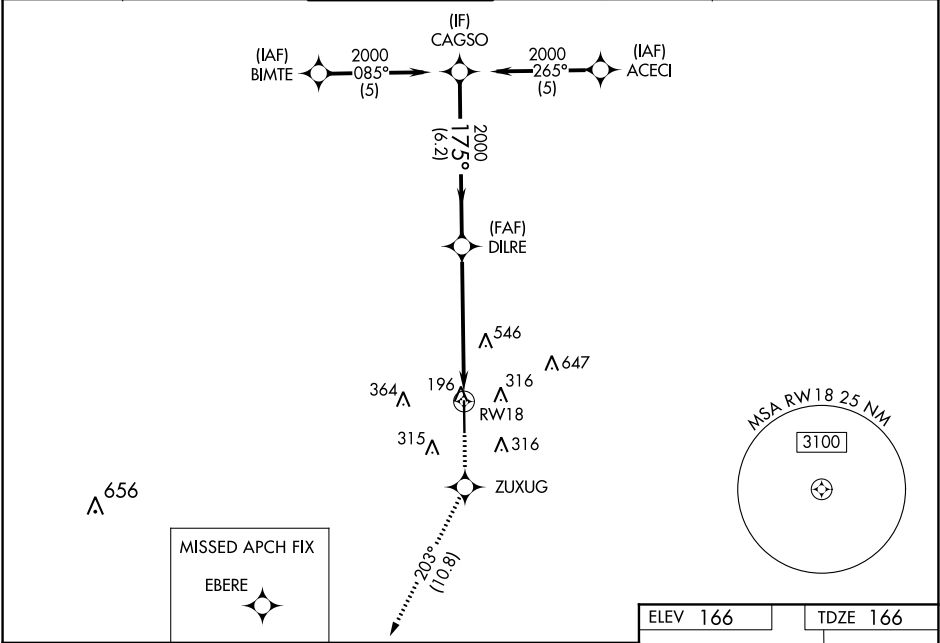
▼

NA

Baro-VNAV NA when using David Wayne Hooks Memorial altimeter setting. For uncompensated Baro-VNAV systems, LNAV/VNAV NA below -15°C (5°F) or above 48°C (118°F). DME/DME RNP-0.3 NA. VDP NA when using David Wayne Hooks Memorial altimeter setting. Helicopter visibility reduction below ¾ SM NA. When local altimeter setting not received, use David Wayne Hooks Memorial altimeter setting and increase all DA 57 feet and all MDA 60 feet; increase LNAV/VNAV all Cats and LNAV Cat C/D visibility ½ mile, and Circling Cat C/D visibility ¼ mile.

MISSED APPROACH: Climb to 2000 direct ZUXUG and on track 203° to EBERE and hold.

ATIS 119.525	HOUSTON APP CON 123.8 257.7	EXECUTIVE TOWER ★ 126.975 (CTAF) 0	GND CON 132.075	CLNC DEL 132.075	GCO 121.725	UNICOM 122.975
------------------------	---------------------------------------	--	---------------------------	----------------------------	-----------------------	--------------------------



ELEV 166		TDZE 166	
CAGSO		DILRE 2000	
2000		2000	
GP 3.00° TCH 40		* 1.8 NM to RW18	
6.2 NM		3.7 NM	
CATEGORY		A	
LPV DA		416-1 250 (300-1)	
LNAV/VNAV DA		708-2 542 (600-2)	
LNAV MDA		780-1 614 (700-1)	
CIRCLING		820-1 654 (700-1)	
		820-1¾ 654 (700-1¾)	
		860-2¼ 694 (700-2¼)	
		REIL Rwy 18-36 0	
		MIRL Rwy 18-36 0	