

WAAS CH 97504 W36A	APP CRS 355°	Rwy Idg 6610 TDZE 164 Apt Elev 166
--	------------------------	---

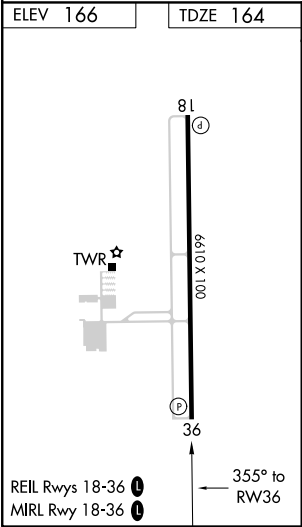
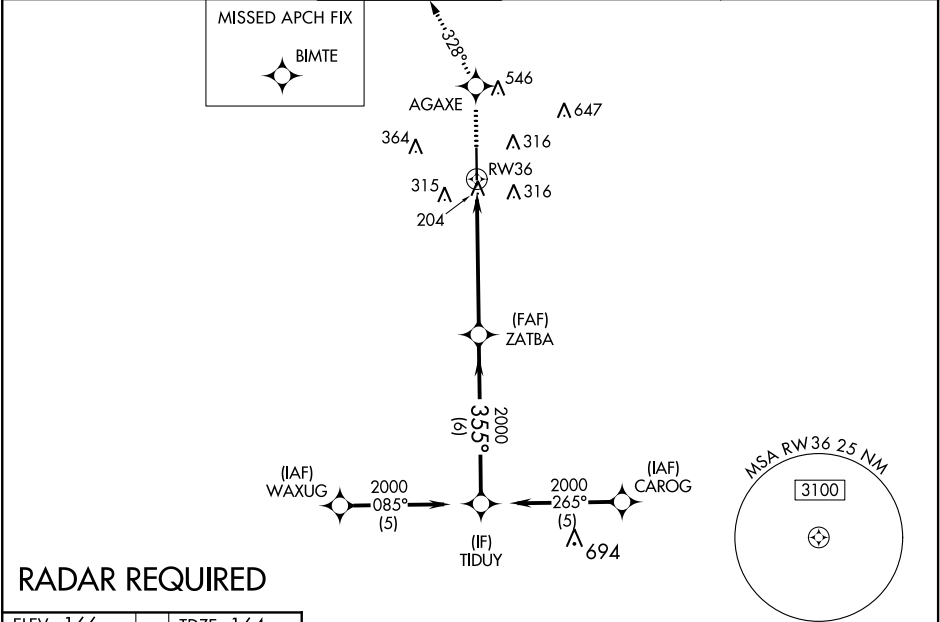
RNAV (GPS) RWY 36

HOUSTON EXECUTIVE (TME)

⚠ Baro-VNAV NA when using David Wayne Hooks Memorial altimeter setting.
For uncompensated Baro-VNAV systems, LNAV/VNAV NA below -15°C (5°F) or above 48°C (118°F). DME/DME RNP-0.3 NA. VDP NA when using David Wayne Hooks Memorial altimeter setting. When local altimeter setting not received, use David Wayne Hooks Memorial altimeter setting and increase LPV DA to 471 feet, LNAV/VNAV DA to 719 feet; increase all MDA 60 feet. Increase LNAV/VNAV visibility ¼ mile all Cats and LNAV and circling Cat C/D ¼ mile.

MISSED APPROACH:
Climb to 2000 direct AGAXE and via 328° track to BIMTE and hold.

ATIS 119.525	HOUSTON APP CON 123.8 257.7	EXECUTIVE TOWER ★ 126.975 (CTAF)	GND CON 132.075	CLNC DEL 132.075	GCO 121.725	UNICOM 122.975
------------------------	---------------------------------------	--	---------------------------	----------------------------	-----------------------	--------------------------



2000	AGAXE	328° tr	BIMTE	Procedure Turn NA
*LNAV only.				
* 1.3 NM to RW36				
RW36				
355°				
ZATBA				
2000				
355°				
TIDUY				
GP 3.00° TCH 40				
CATEGORY	A	B	C	D
LPV DA	414-1 250 (300-1)			
LNAV/VNAV DA	662-1¾ 498 (500-1¾)			
LNAV MDA	620-1	456 (500-1)	620-1¼ 456 (500-1¼)	620-1½ 456 (500-1½)
CIRCLING	820-1	654 (700-1)	820-1¾ 654 (700-1¾)	860-2¼ 694 (700-2¼)