

WAAS
CH **50522**
W18A

APP CRS
178°

Rwy Idg
TDZE
Apt Elev
4001
285
285

RNAV (GPS) RWY 18

HEARNE MUNI (LHB)

RNP APCH.

▲

Baro-VNAV and VDP NA when using College Station altimeter setting. For uncompensated Baro-VNAV systems, LNAV/VNAV NA below -15°C or above 54°C.

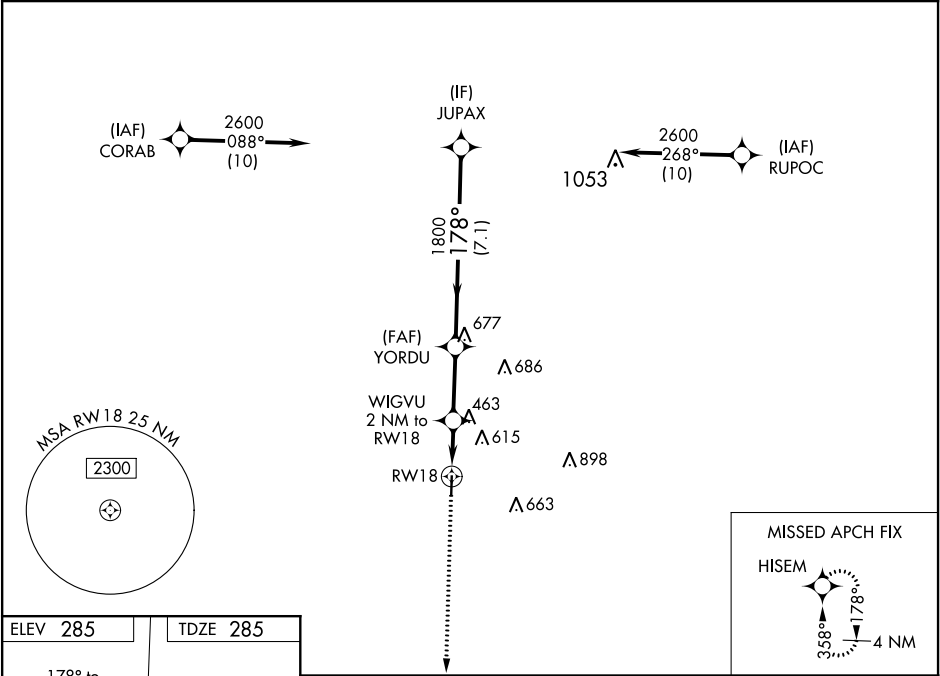
MISSED APPROACH: Climb to 2100 direct HISEM and hold.

AWOS-3
118.675

HOUSTON APP CON
134.3 360.85

CTAF
122.9

123.3 0



ELEV 285	TDZE 285
178° to RW18	81
4001 x 75	36
☆	
2100	HISEM
*LNAV only.	
WIGVU 2 NM to RW18	
*1.4 NM to RW18	
RW18	
960*	
1.4 NM	0.6
2.6 NM	7.1 NM
JUPAX	2600
178°	1800
GP 3.00°	TCH 40
CATEGORY	A
LPV DA	485-¾ 200 (200-¾)
LNAV/VNAV DA	583-1 298 (300-1)
LNAV MDA	780-1 495 (500-1)
CIRCLING	800-1 515 (600-1)
	880-1 595 (600-1)
	920-1¾ 635 (700-1¾)
	NA