

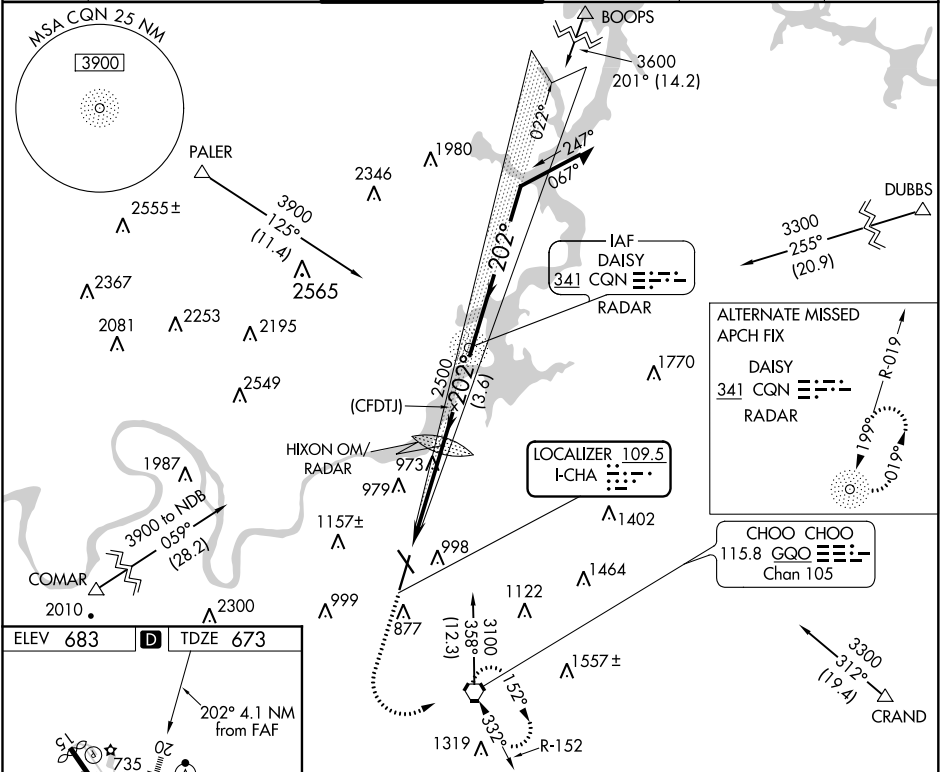
LOC I-CHA	APP CRS	Rwy Idg	7400
109.5	202°	TDZE	673
		Apt Elev	683

ILS or LOC RWY 20

LOVELL FIELD (CHA)

ADF or RADAR required for procedure entry.		ALSF-2	MISSED APPROACH: Climb to 1300 then climbing left turn to 3100 direct GQO VORTAC and hold, continue climb-in-hold to 3100.
<div><div></div><div></div><div></div></div> <div>Circling for Rwy 15, 33 NA at night. For inop ALS, increase S-LOC 20 Cat A/B RVR to 5500 and Cat C/D visibility to 1 ½ SM. Disregard inner marker indication.</div>		<div><div></div><div></div></div>	

ATIS	CHATTANOOGA APP CON *	CHATTANOOGA TOWER *	GND CON	CLNC DEL	UNICOM
119.85	125.1 379.1	118.3 (CTAF) 257.8	121.7 348.6	120.95 348.6	122.95



ELEV 683	D	TDZE 673
<div><div></div><div></div><div></div></div> <div>202° 4.1 NM from FAF</div>		
<div><div></div><div></div><div></div></div> <div>MIRL Rwy 15-33 HIRL Rwy 2-20 TDZ/CL Rwy 20</div>		
FAF to MAP 4.1 NM		
Knots	60	90 120 150 180
Min:Sec	4:06	2:44 2:03 1:38 1:22

1300 3100 GQO		CQN NDB/RADAR		Remain within 10 NM
* LOC only.		HIXON OM/RADAR (CFDTJ)		022° 3000
2055 2100*		2500		GS 3.00° TCH 56
4.1 NM		3.6 NM		
CATEGORY	A	B	C	D
S-ILS 20	873/18		200 (200-½)	
S-LOC 20	1240/24	567 (600-½)	1240-1¼	567 (600-1¼)
CIRCLING	1300-1 617 (700-1)	1340-1 657 (700-1)	1480-2¼ 797 (800-2¼)	1580-3 897 (900-3)