
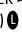


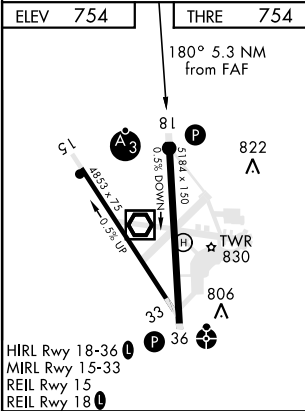
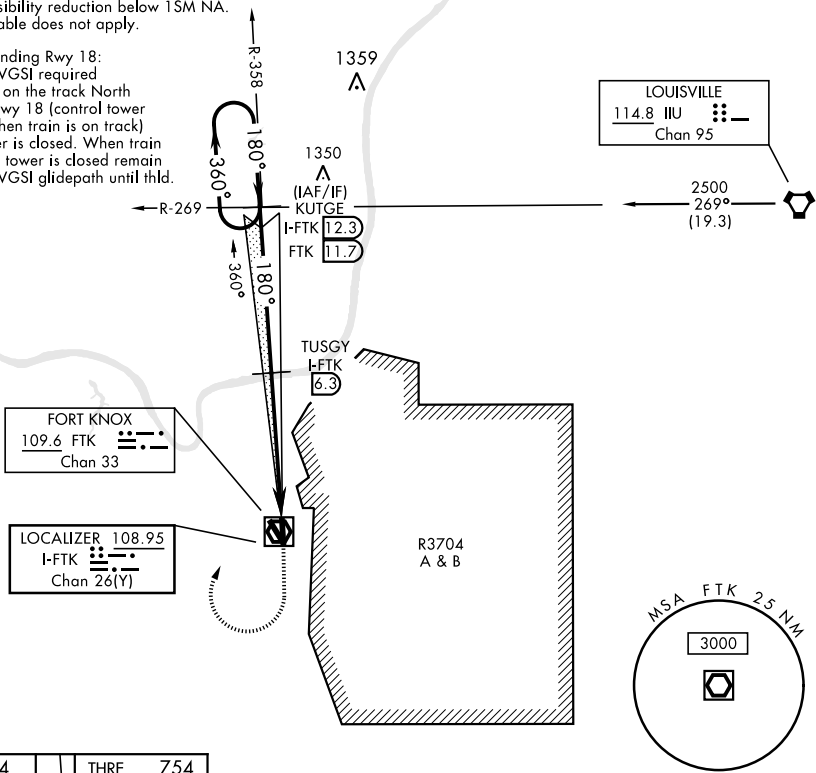
FORT KNOX, KENTUCKY

ILS or LOC/DME RWY 18

LOC/DME I-FTK 108.95 Chan 26 (Y)	APCH CRS 180°	Rwy Idg 5184 THRE 754 Arpt Elev 754	AL-151 [USA]	GODMAN AAF (KF ² TK)
* S-ILS 18 mins NA when train is on track North and East of Rwy 18, control twr will advise when train is on track. S-ILS 18 mins NA when control twr closed. ** Circling NA E of Rwy 18-36.			SSALR 	MISSED APPROACH: Climb to 1300, then climbing right turn to 2500 on heading 030° to intercept FTK VOR/DME R-358 to KUTGE INT/I-FTK 12.3 DME and hold.
ATIS★ 109.6	LOUISVILLE APP CON 132.075 327.0	GODMAN TOWER★ 133.35 (CTAF) 	GND CON 121.9 239.3	

Helicopter visibility reduction below 1SM NA.
Inoperative table does not apply.

LOC Night landing Rwy 18:
Operational VGSI required when train is on the track North and East of Rwy 18 (control tower will advise when train is on track) or when tower is closed. When train is on track or tower is closed remain on or above VGSI glidepath until thld.



ELEV 754	THRE 754	1300	2500	KUTGE I-FTK 12.3	TUSGY I-FTK 6.3	KUTGE FTK R-358 I-FTK 12.3 FTK 11.7	2500	GS 3.00° TCH 56
180° 5.3 NM from FAF		I-FTK DME	VGSI and ILS glidepath not coincident	I-FTK 1	I-FTK 1	I-FTK 1	I-FTK 1	I-FTK 1
180° 5.3 NM from FAF		5.3 NM						
CATEGORY	A	B	C	D				
S-ILS 18 *	1005-1		250	(300-1)				
S-LOC 18	1120-1		365	(400-1)				
CIRCLING **		1300-1	545 (600-1)	1300-1½	545 (600-1½)	1320-2	565 (600-2)	

FORT KNOX, KENTUCKY
Orig C 08OCT20

37°54'N-85°58'W

GODMAN AAF (KF²TK)

ILS or LOC/DME RWY 18

SE-1, 31 DEC 2020 to 28 JAN 2021

SE-1, 31 DEC 2020 to 28 JAN 2021