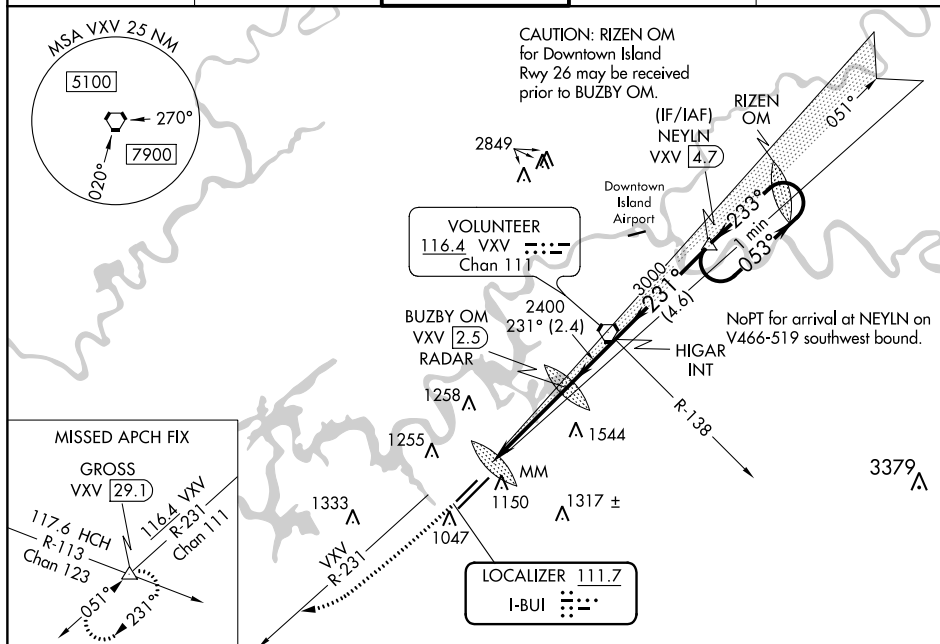


ILS RWY 23R (CAT II)
MC GHEE TYSON (TYS)

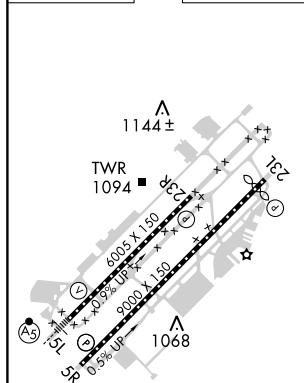


MISSED APPROACH: Climb to 2000 then climbing right turn to 4000 on heading 240° and VXX VORTAC R-231 to GROSS INT/VXX 29.1 DME and hold.

ATIS 128.35	KNOXVILLE APP CON 123.9 360.8	KNOXVILLE TOWER 121.2 257.8	GND CON 121.9 348.6	CLNC DEL 121.65
-----------------------	---	---------------------------------------	-------------------------------	---------------------------

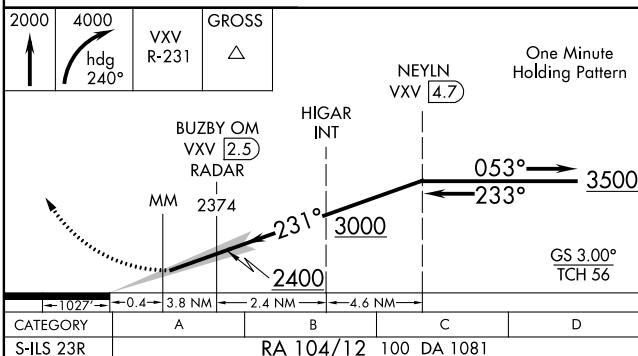


ELEV 981	D	TDZE 981
----------	----------	----------



HIRL Rwy 5L-23R and 5R-23L
REIL Rwy 5R, 23L, and 23R
TDZ/CL Rwy 5R

DME or RADAR REQUIRED



CATEGORY II ILS - SPECIAL AIRCREW
& AIRCRAFT CERTIFICATION REQUIRED

SE-1, 31 DEC 2020 to 28 JAN 2021