
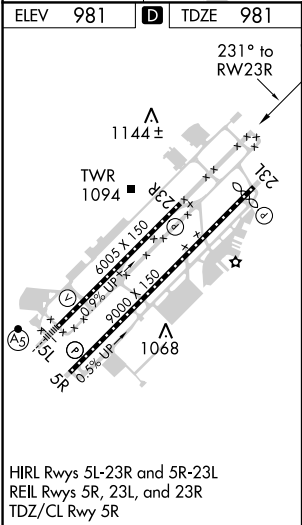
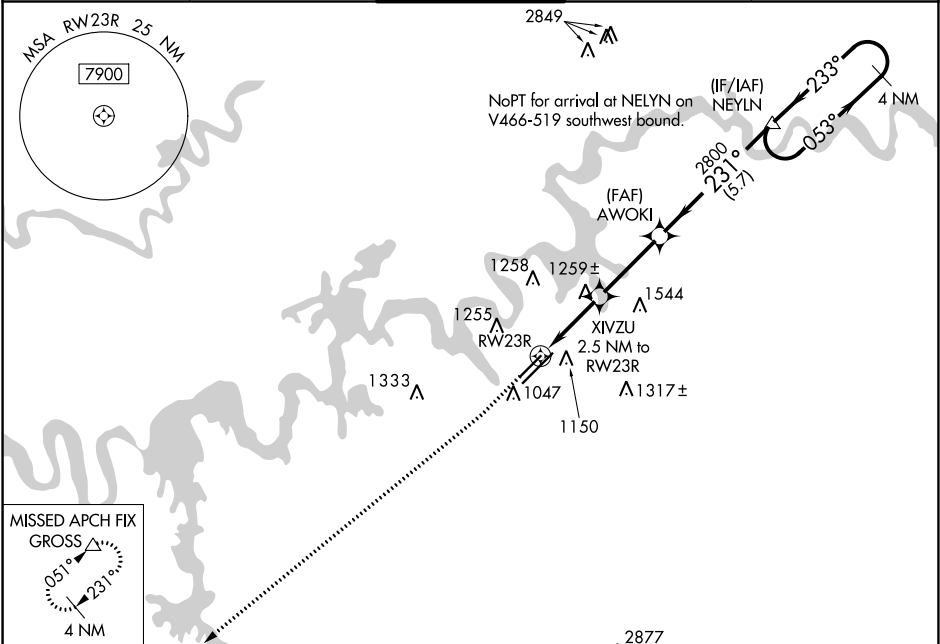


WAAS CH 81902 W23A	APP CRS 231°	Rwy Idg TDZE Apt Elev	6005 981 981
--	------------------------	-----------------------------	---

RNAV (GPS) RWY 23R
MC GHEE TYSON (T'YS)

 ASR	For uncompensated Baro-VNAV systems, LNAV/VNAV NA below -10°C (14°F) or above 54°C (130°F). DME/DME RNP-0.3 NA.	MISSED APPROACH: Climb to 1600 then climb to 3000 direct direct GROSS and hold.
--	---	---

ATIS 128.35	KNOXVILLE APP CON 123.9 360.8	KNOXVILLE TOWER 121.2 257.8	GND CON 121.9 348.6	CLNC DEL 121.65
-----------------------	---	---------------------------------------	-------------------------------	---------------------------



ELEV	981	D	TDZE	981
1600	3000	GROSS		
*LNAV only.				
XIVZU 2.5 NM to RWY 23R				
*1.5 NM to RWY 23R				
*1820				
AWOKI 2800				
NEYLN Holding Pattern				
053° → 233° 3500				
GP 3.00° TCH 56				
CATEGORY	A	B	C	D
LPV DA	1181/18 200 (200-½)			
LNAV/VNAV DA	1535-1½ 554 (600-1½)			
LNAV MDA	1520/24	539 (600-½)	1520/55	539 (600-1)
CIRCLING	1520-1 539 (600-1)	1620-1 639 (700-1)	1660-2 679 (700-2)	1900-3 919 (1000-3)

SE-1, 31 DEC 2020 to 28 JAN 2021

SE-1, 31 DEC 2020 to 28 JAN 2021