

WAAS
CH **48802**
W05A

APP CRS
051°

Rwy Idg
TDZE **953**
Apt Elev **981**

RNAV (GPS) RWY 5L

MC GHEE TYSON (T'YS)

⚠

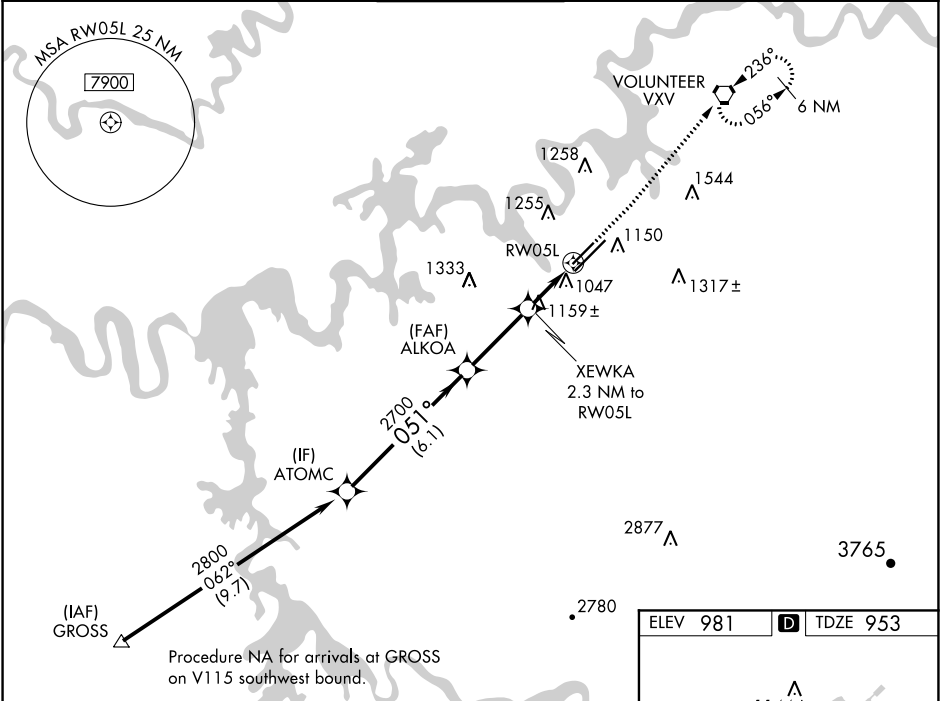
ASR

For uncompensated Baro-VNAV systems, LNAV/VNAV NA below -10°C (14°F) or above 54°C (130°F). DME/DME RNP-0.3 NA. For inop MALS, increase LNAV Cat C/D visibility to 1½. **RVR 1800 authorized with use of FD or AP or HUD to DA.

MALS

MISSED APPROACH: Climb to 1500 then climb to 4000 direct VXV VORTAC and hold, continue climb-in-hold to 4000.

ATIS 128.35	KNOXVILLE APP CON 123.9 360.8	KNOXVILLE TOWER 121.2 257.8	GND CON 121.9 348.6	CLNC DEL 121.65
-----------------------	---	---------------------------------------	-------------------------------	---------------------------



VGSI and RNAV glidepath not coincident.

ATOMC

2800

051°

2700

1700

GP 3.00°

TCH 57

ALKOA

2700

*1.3 NM to RW05L

XEWKA

2.3 NM to RW05L

*1.3 NM to RW05L

RW05L

1500

4000

VXV

*LNAV only.

6.1 NM

3.1 NM

1 NM

1.3 NM

CATEGORY	A	B	C	D
LPV DA**	1153/24 200 (200-½)			
LNAV/VNAV DA	1321/45 368 (400-¾)			
LNAV MDA	1420/24 467 (500-½)		1420/50 467 (500-1)	
CIRCLING	1500-1 519 (600-1)	1620-1 639 (700-1)	1660-2 679 (700-2)	1900-3 919 (1000-3)

HIRL Rwy 5L-23R and 5R-23L

REIL Rwy 5R, 23L, and 23R

TDZ/CL Rwy 5R