

WAAS CH 97410 W05B	APP CRS 051°	Rwy Idg 8600 TDZE 959 Apt Elev 981
--	------------------------	---

RNAV (GPS) RWY 5R

MC GHEE TYSON (TYS)

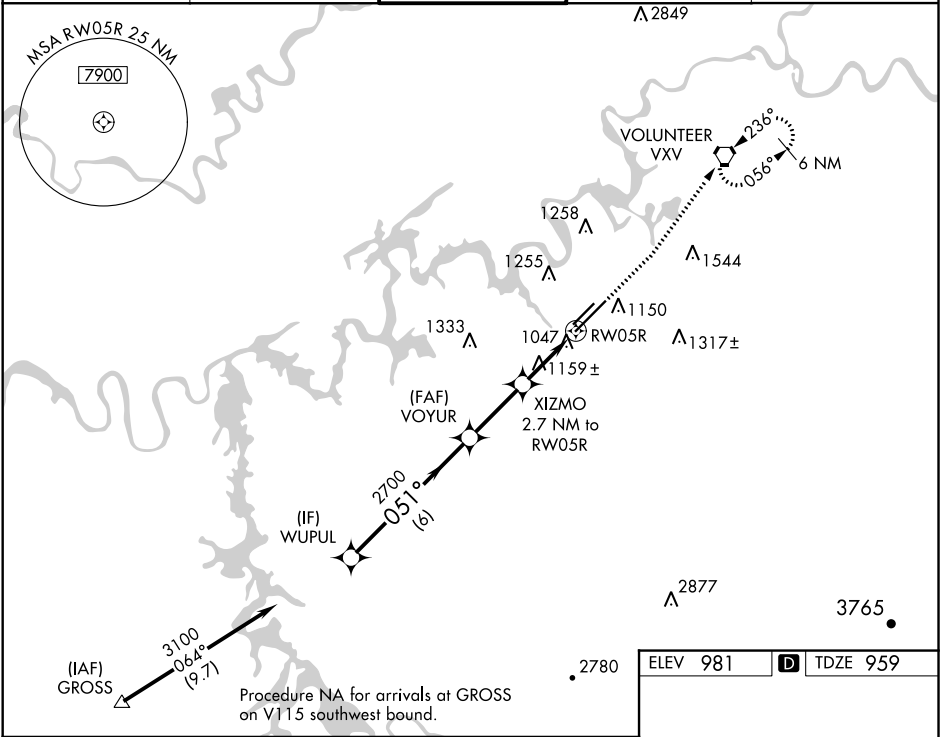
⚠

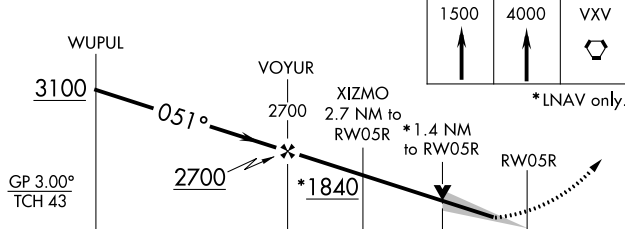
ASR

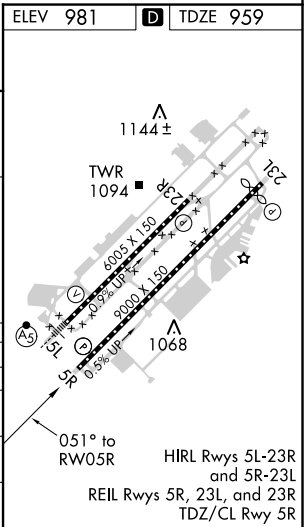
For uncompensated Baro-VNAV systems, LNAV/VNAV NA below -10° C (14° F) or above 54° C (130° F). DME/DME RNP-0.3 NA.

MISSED APPROACH: Climb to 1500 then climb to 4000 direct VXV VORTAC and hold, continue climb-in-hold to 4000.

ATIS 128.35	KNOXVILLE APP CON 123.9 360.8	KNOXVILLE TOWER 121.2 257.8	GND CON 121.9 348.6	CLNC DEL 121.65
-----------------------	---	---------------------------------------	-------------------------------	---------------------------



 <p>WUPUL 3100 051° 2700 VOYUR 2700 XIZMO 2.7 NM to RW05R *1.4 NM to RW05R *1840 RW05R</p> <p>GP 3.00° TCH 43</p> <p>1500 4000 VVX</p> <p>*LNAV only.</p> <p>6 NM 2.7 NM 1.3 NM 1.4 NM</p>				
CATEGORY	A	B	C	D
LPV DA	1159- ³ / ₄		200 (200- ³ / ₄)	
LNAV/VNAV DA	1276-1 ¹ / ₈		317 (300-1 ¹ / ₈)	
LNAV MDA	1420-1	461 (500-1)	1420-1 ³ / ₈	461 (500-1 ³ / ₈)
CIRCLING	1500-1 519 (600-1)	1620-1 639 (700-1)	1660-2 679 (700-2)	1900-3 919 (1000-3)



SE-1, 31 DEC 2020 to 28 JAN 2021

SE-1, 31 DEC 2020 to 28 JAN 2021