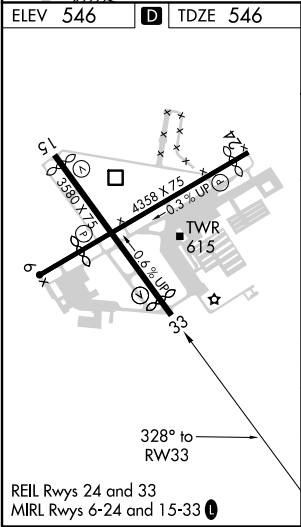
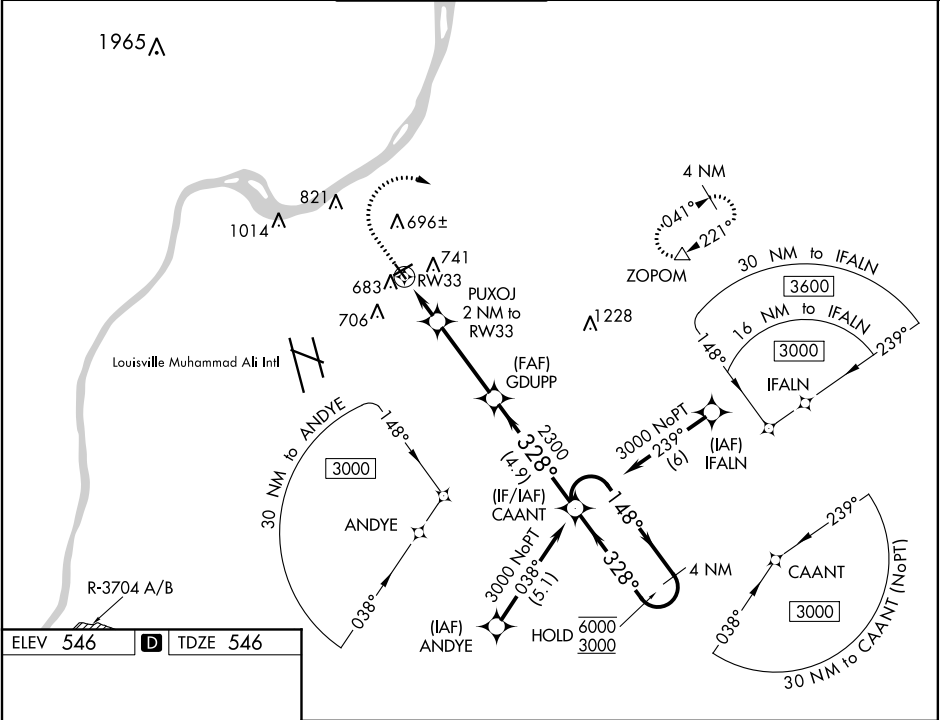


WAAS CH 99526 W33A	APP CRS 328°	Rwy Idg TDZE 546 Apt Elev 546
--	------------------------	---

RNAV (GPS) RWY 33
BOWMAN FIELD (LOU)

RNP APCH.	MISSED APPROACH: Climb to 1000 then climbing right turn to 3000 direct ZOPOM and hold.
<div><div>▼</div><div>▲</div></div> <div>Rwy 33 helicopter visibility reduction below 1 SM NA. When local altimeter setting not received, use Louisville Muhammad Ali Intl altimeter setting. Straight-in Rwy 33 NA at night, Circling Rwy 6, 15, 33 NA at night.</div>	

ATIS 124.15	LOUISVILLE APP CON 132.075 327.0	BOWMAN TOWER★ 119.5 (CTAF) 257.625	GND CON 121.8	CLNC DEL 118.9	UNICOM 122.95
-----------------------	--	--	-------------------------	--------------------------	-------------------------



1000	3000	ZOPOM	4 NM Holding Pattern	
↑	↖	△		
PUXOJ 2 NM to RW33		GDUPP	CAANT	
RW33		328°	148°	6000
1200		2300	328°	3000
3.00° TCH 42				
2 NM		3.4 NM	4.9 NM	
CATEGORY	A	B	C	D
LP MDA	860-1	314 (400-1)	NA	
LNAV MDA	920-1	374 (400-1)	NA	
CIRCLING	1060-1 514 (600-1)	1080-1 534 (600-1)	NA	

SE-1, 31 DEC 2020 to 28 JAN 2021

SE-1, 31 DEC 2020 to 28 JAN 2021