

SE-1, 31 DEC 2020 to 28 JAN 2021

D-ATIS 118.725
CLNC DEL 126.1 275.8
CPDLC
GND CON 121.7 348.6
LOUISVILLE TOWER 124.2 257.8
LOUISVILLE DEP CON 132.075 327.0

TAKEOFF MINIMUMS

Rwy 11: NA-ATC.

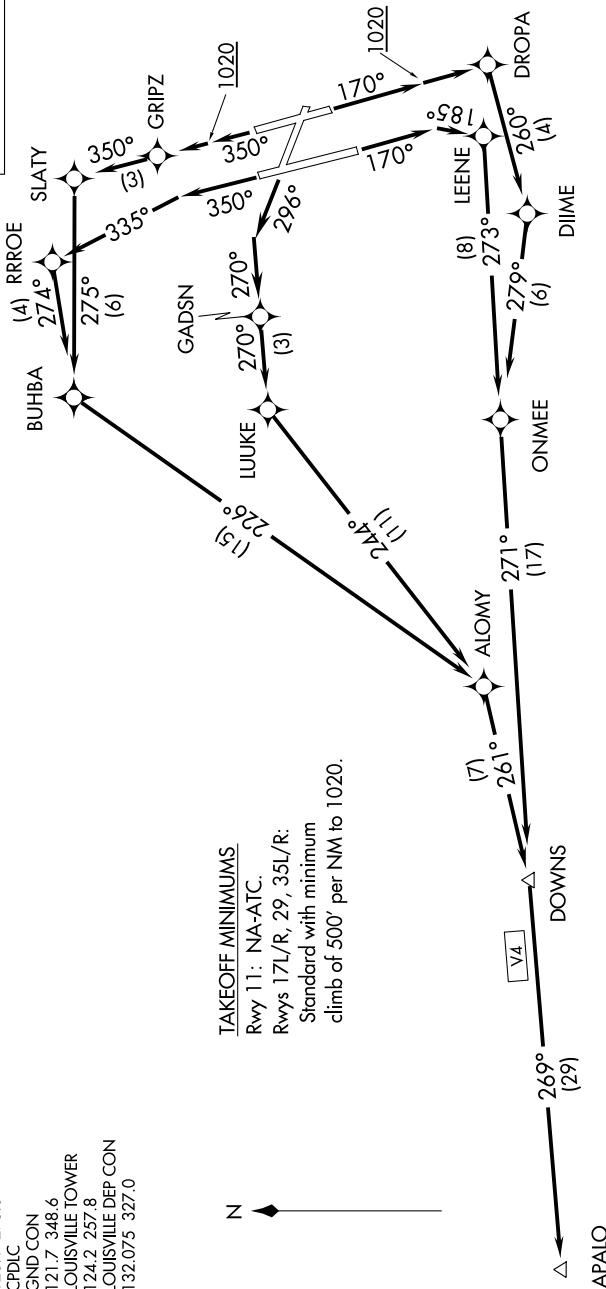
Rwys 17L/R, 29, 35L/R:

Standard with minimum

climb of 500' per NM to 1020.



TOP ALTITUDE:
5000



- NOTE: RNAV 1.
- NOTE: DME/DME/IRU or GPS required.
- NOTE: RADAR required for non-GPS equipped aircraft.
- NOTE: For Turbojet aircraft only.
- NOTE: If unable to accept climb rate, advise ATC on initial contact.
- NOTE: Transponder code will be issued via PDC or Louisville clearance delivery.

(NARRATIVE ON FOLLOWING PAGE)

NOTE: Chart not to scale.

SE-1, 31 DEC 2020 to 28 JAN 2021