

LOC/DME I-RLI <u>109.35</u> Chan 30(Y)	APP CRS 350°	Rwy Idg 10000 TDZE 464 Apt Elev 501
--	------------------------	--

ILS RWY 35L (CAT II & III)
LOUISVILLE MUHAMMAD ALI INTL (SDF)

RNAV 1-GPS required. DME or RADAR required.

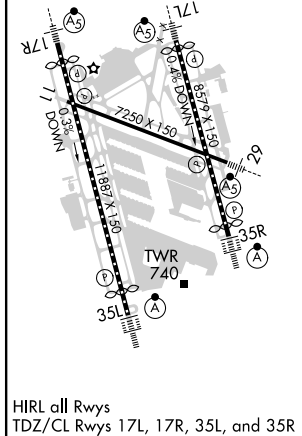
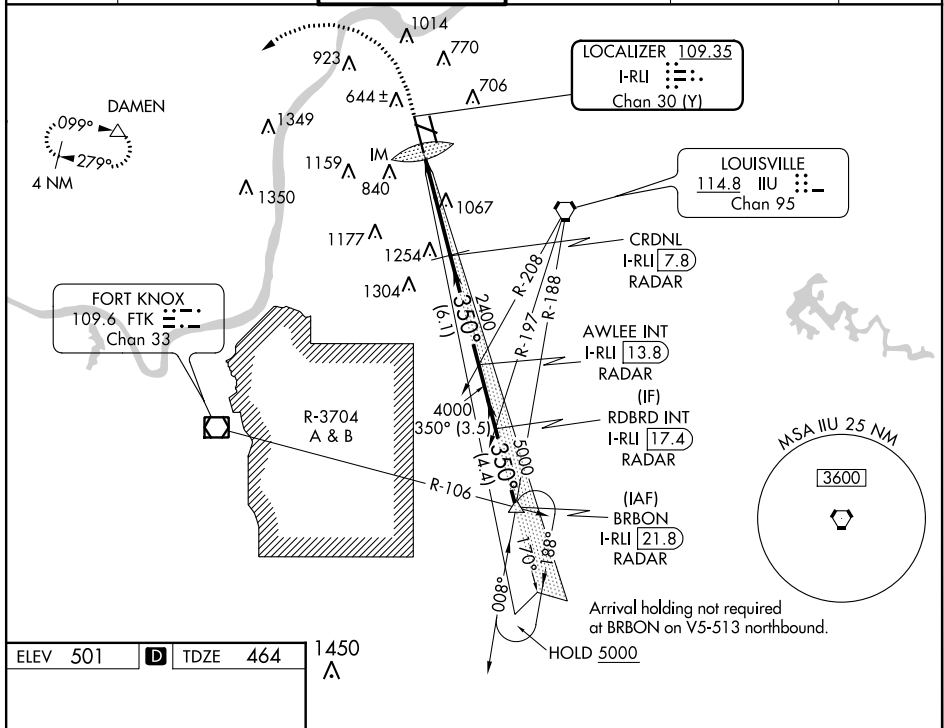
T Simultaneous approach authorized. CAT II: RVR 1000 authorized with specific OPSPEC, MSPEC, or LOA approval and use of autoland or HUD to touchdown.

ALSF-2



MISSED APPROACH: Climb to 1600 then climbing left turn to 3000 direct to DAMEN and hold. (GPS required)

D-ATIS 118.725	LOUISVILLE APP CON 132.075 327.0	LOUISVILLE TOWER 124.2 257.8	GND CON 121.7 348.6	CLNC DEL 126.1 275.8	CPDLC
-------------------	-------------------------------------	---------------------------------	------------------------	-------------------------	-------



LOUISVILLE, KENTUCKY
Amdt 4 15AUG19

LOUISVILLE MUHAMMAD ALI INTL (SDF)
ILS RWY 35L (CAT II & III)

38°10'N-85°44'W

SE-1, 31 DEC 2020 to 28 JAN 2021