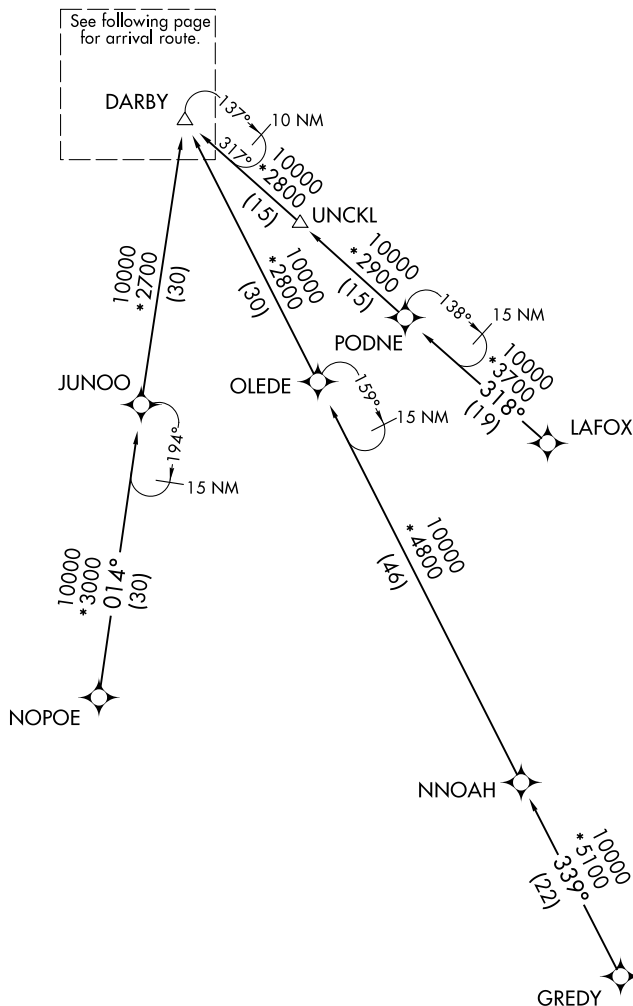


## MAUDD SIX ARRIVAL (RNAV) Transition Routes

LOUISVILLE, KENTUCKY

- NOTE: RADAR required.  
NOTE: RNAV 1.  
NOTE: DME/DME/IRU or GPS required.  
NOTE: Turbojet aircraft only.

LOUISVILLE APP CON  
132.075 327.0  
D-ATIS  
118.725



NOTE: Chart not to scale.

(CONTINUED ON FOLLOWING PAGE)

## MAUDD SIX ARRIVAL (RNAV) Transition Routes

LOUISVILLE, KENTUCKY

(DARBY.MAUDD6) 15AUG19

LOUISVILLE MUHAMMAD ALI INTL (SDF)