

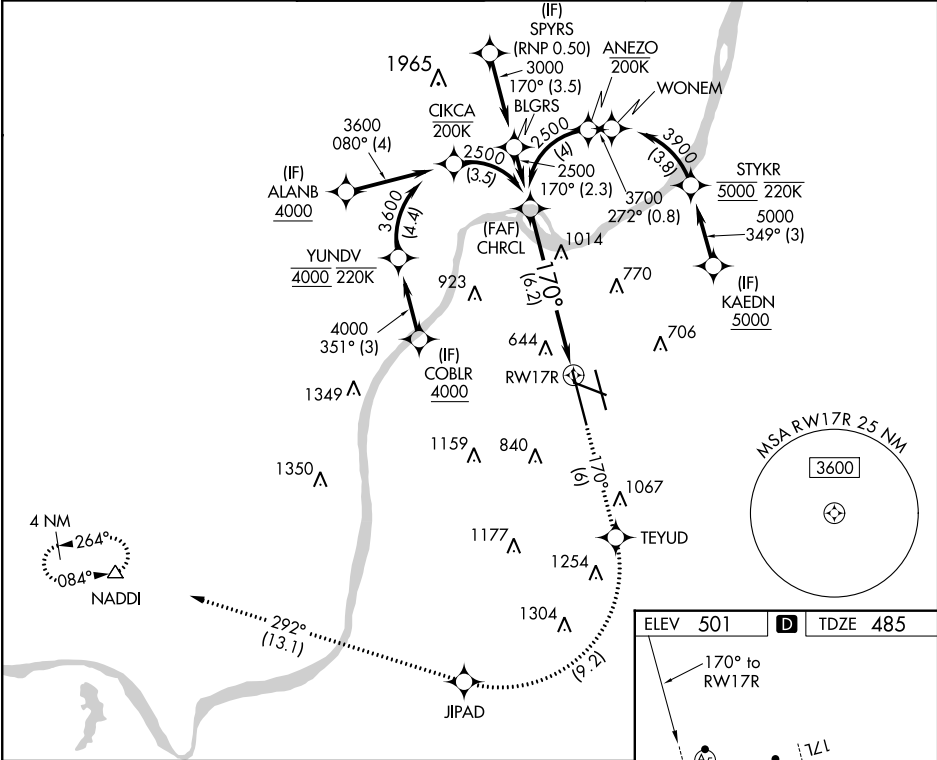






APP CRS 170°	Rwy Idg	10000
	TDZE	485
	Apt Elev	501

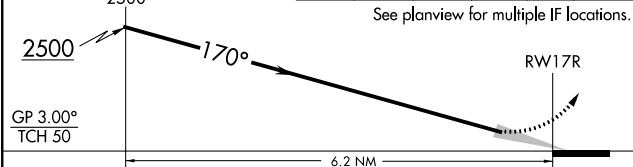
RNAV (RNP) Z RWY 17R
LOUISVILLE MUHAMMAD ALI INTL (SDF)

RNP AR APCH. RF required.	MALSR 	MISSED APPROACH: Climb to 3000 on track 170° to TEYUD right turn to JIPAD and on track 292° to NADDI and hold.
 For uncompensated Baro-VNAV systems, procedure NA below -14°C or above 54°C. For inop ALS, increase RNP 0.30 all Cats visibility to 1 3/4 SM. Simultaneous approach authorized, except for arrivals at KAEDN, ALANB, and COBLR.		

D-ATIS 118.725	LOUISVILLE APP CON 132.075 327.0	LOUISVILLE TOWER 124.2 257.8	GND CON 121.7 348.6	CLNC DEL 126.1 275.8	CPDLC
--------------------------	--	--	-------------------------------	--------------------------------	-------



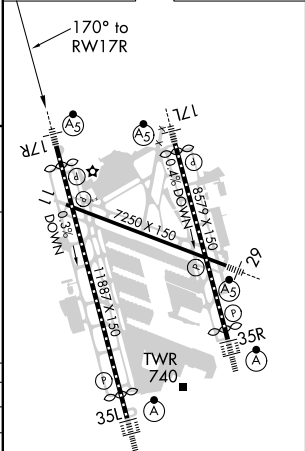
VGSI and RNAV glidepath not coincident (VGSI Angle 3.00/TCH 75).	3000	TEYUD	JIPAD	tr 292°	NADDI
CHRCL	2500				
	tr 170°				



CATEGORY	A	B	C	D
RNP 0.30 DA		974/60	489 (500-1)	

AUTHORIZATION REQUIRED

ELEV 501	D	TDZE 485
----------	----------	----------



HIRL all Rwys
TDZ/CL Rwys 17L, 17R, 35L and 35R

SE-1, 31 DEC 2020 to 28 JAN 2021

SE-1, 31 DEC 2020 to 28 JAN 2021