

RNAV (GPS) Y RWY 35R
LOUISVILLE MUHAMMAD ALI INTL (SDF)

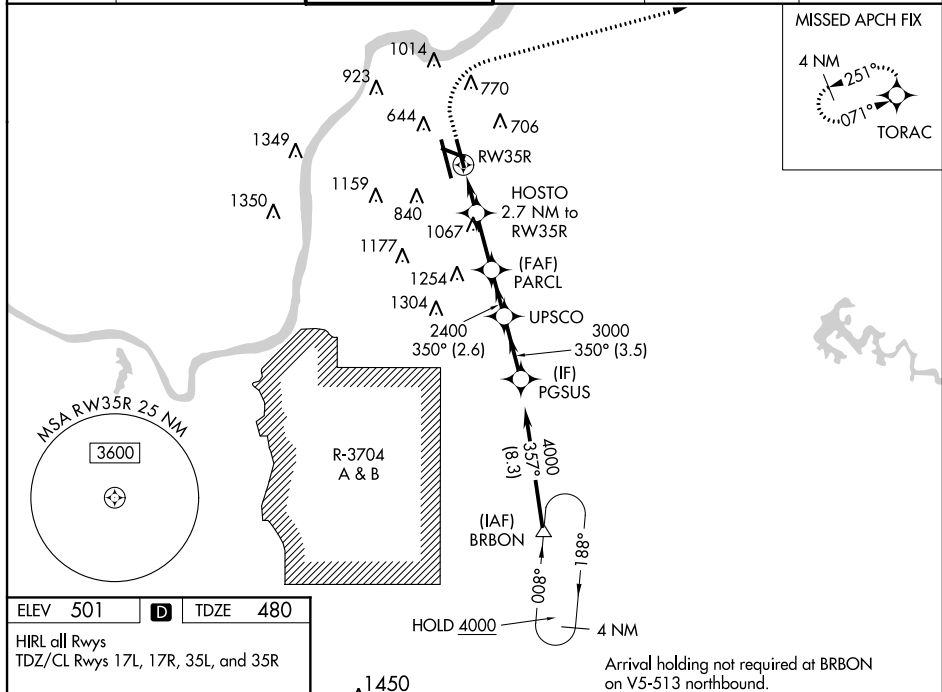
T Circling Rwy 11 NA at night. Simultaneous approach authorized. LNAV procedure NA during simultaneous operations. Use of FD or AP required during simultaneous operations.

A For uncompensated Baro-VNAV systems, LNAV/VNAV NA below -14°C or above 54°C. For inop ALS, increase LNAV/VNAV all Cats visibility to 1% SM.

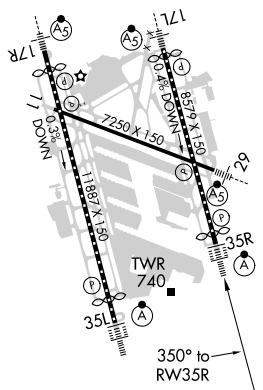


MISSED APPROACH:
Climb to 1600 then
climbing right turn
to 4000 direct
TORAC and hold.

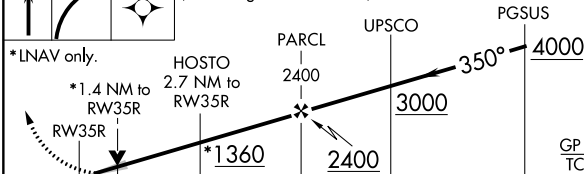
CPDLC



HIRL all Rwy's
TDZ/CL Rwy's 17L, 17R, 35L, and 35R



1600	4000	TORAC	VGSI and RNAV glidepath not coincident (VGSI Angle 3.00/TCH 72).
------	------	-------	--



	1.4	1.3 NM	3.2 NM	2.6 NM	3.5 NM	
CATEGORY	A	B	C	D		
LPV DA	680/18		200 (200-½)			
LNAV/ VNAV DA	909/50		429 (500-1)			
LNAV MDA	1000/24	520 (500-½)	1000/55	520 (500-1)		
C CIRCLING	1040-1 539 (600-1)	1140-1 639 (700-1)	1160-1¾ 659 (700-1¾)	1400-3 899 (900-3)		