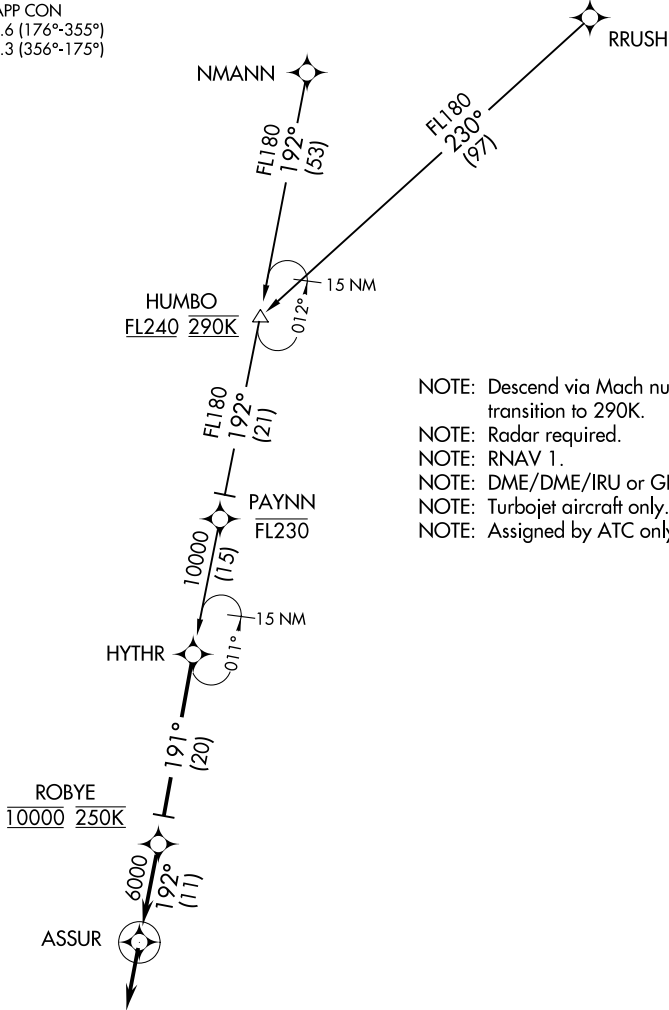


MEMPHIS APP CON  
119.1 291.6 (176°-355°)  
125.8 338.3 (356°-175°)  
D-ATIS  
127.75



- NOTE: Descend via Mach number until transition to 290K.  
NOTE: Radar required.  
NOTE: RNAV 1.  
NOTE: DME/DME/IRU or GPS required.  
NOTE: Turbojet aircraft only.  
NOTE: Assigned by ATC only.

NOTE: Chart not to scale.

ARRIVAL ROUTE DESCRIPTION

HUMBO TRANSITION (HUMBO.HYTHR2):  
NMANN TRANSITION (NMANN.HYTHR2):  
RRUSH TRANSITION (RRUSH.HYTHR2):

From over HYTHR on track 191° to ROBYE, cross ROBYE at 10000 at 250K, then on track 192° to ASSUR, then on track 192°. Expect radar vectors to final approach course.

SE-1, 31 DEC 2020 to 28 JAN 2021

SE-1, 31 DEC 2020 to 28 JAN 2021