

ILS or LOC RWY 18C
MEMPHIS INTL (MEM)

- MISSED APPROACH:** Climb to 900 then climbing left turn to 5000 on MEM VORTAC R-151 to KEEZE INT/MEM 10.4 DME and hold. continue climb-in-hold to 5000.

D-ATIS	127.75
--------	--------

RADAR REQUIRED

CLNC DEL 125.2	CPDLC
--------------------------	-------

RADAR REQUIREMENTS

(IF) LAURI
MEM 13.7
RADAR

JALDO
MEM 7.6
RADAR

1001 Δ

720 Δ

559 Δ

602 Δ

506 Δ

881 Δ

1337 Δ

1450 Δ

MEMPHIS
117.5 MEM
Chan 122

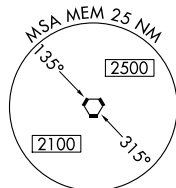
LOCALIZER 111.95
I-SDU

KEEZE INT
MEM 10.4

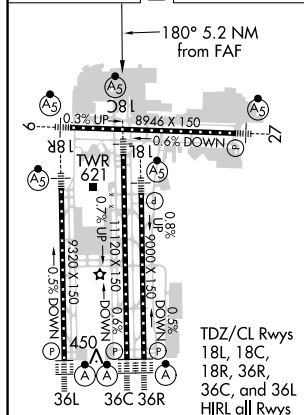
NESBT
HU 23.8
RADAR

290

NM
AF



ELEV 341	D	TDZE 290
----------	----------	----------



FAF to MAP 5.2 NM					
Knots	60	90	120	150	180
Min:Sec	5:12	3:28	2:36	2:05	1:44

CATEGORY	A	B	C	D	E
S-ILS 18C	657/40 367 (400-¾)				
S-LOC 18C	860/24	570 (600-½)	860/50 570 (600-1)	860/60 570 (600-¼)	860-1½ 570 (600-½)
C CIRCLING	940-1	599 (600-1)	940-1½ 599 (600-1½)	1020-2¼ 679 (700-2¼)	1140-2¾ 799 (800-2¾)