

LOC/DME I-EXS <b>111.15</b> Chan <b>48(Y)</b>	APP CRS <b>180°</b>	Rwy Idg TDZE Apt Elev	<b>9000</b> <b>301</b> <b>341</b>
---	------------------------	-----------------------------	---

ILS or LOC RWY 18L  
MEMPHIS INTL (MEM)

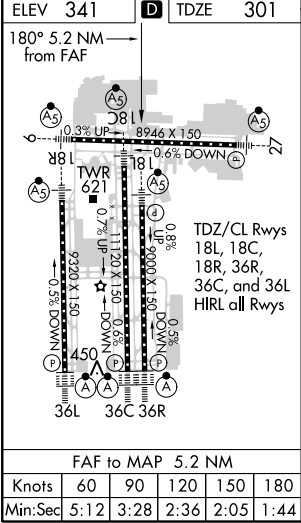
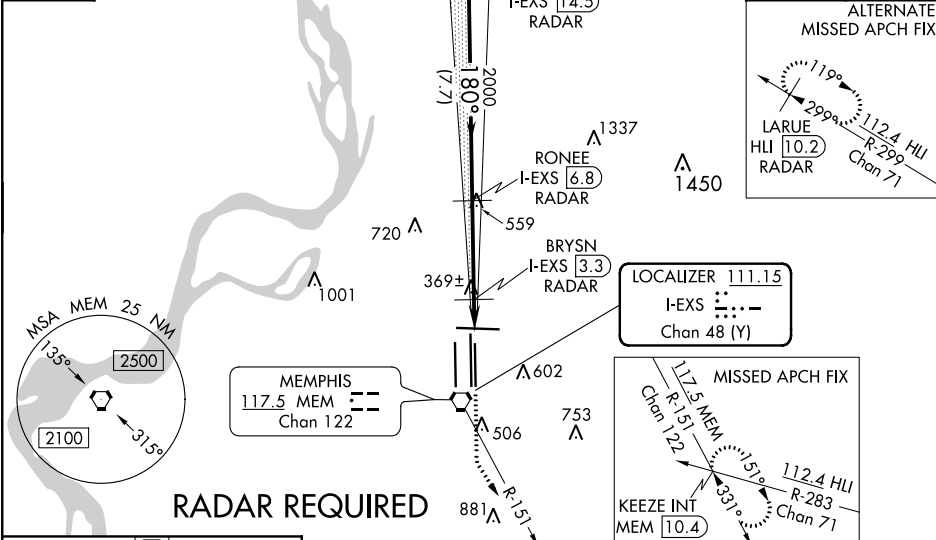
**Simultaneous approach authorized. DME or RADAR required.**  
For inop ALS, increase S-ILS 18L Cat E visibility to RVR 4000,  
S-LOC 18L Cat E visibility to 1 3/4 SM, BRYSN fix minimums,  
increase S-LOC 18L Cats D and E visibility to RVR 5000.

**MALSR**

**MISSED APPROACH:** Climb to 900 then  
climbing left turn to 5000 on MEM VORTAC  
R-151 to KEEZE INT/MEM 10.4 DME and  
hold, continue climb-in-hold to 5000.

MEMPHIS APP CON		MEMPHIS TOWER		GND CON	
<b>119.1</b>	<b>291.6</b>	(Rwy 9-27)	<b>118.3 257.8</b>	(Rwy 9-27)	<b>121.0 379.2</b>
<b>125.8</b>	<b>338.3</b>	(Rwys 18C-36C, 18L-36R)	<b>119.7 257.8</b>	(Rwys 18C-36C, 18L-36R)	<b>121.9 379.2</b>
		(Rwy 18R-36L)	<b>128.425 257.8</b>	(Rwy 18R-36L)	<b>121.65 379.2</b>

D-ATIS <b>127.75</b>	CLNC DEL <b>125.2</b>	CPDLC
-------------------------	--------------------------	-------



VGSI and ILS glidepath not coincident (VGSI Angle 3.00/TCH 73).					900 ↑	5000 MEM R-151	KEEZE INT
REISE I-EXS [14.5] RADAR		RONEE I-EXS [6.8] RADAR		BRYSN I-EXS [3.3] RADAR	I-EXS [2.5]	I-EXS [1.7]	*LOC only.
3000		2000		2000			
180°		*820					
GS 3.00° TCH 60		7.7 NM		3.5 NM		0.8 NM 0.9 NM	
CATEGORY	A		B		C		D E
S-ILS 18L	501/18		200 (200-½)		501/24 200 (200-½)		
S-LOC 18L	820/24	519 (500-½)	820/50 519 (500-1)	820/60	519 (500-1¼)		
CIRCLING	940-1	599 (600-1)	940-1½ 599 (600-1½)	1020-2¼ 679 (700-2¼)	1140-2¾ 799 (800-2¾)		
BRYSN FIX MINIMUMS							
S-LOC 18L	620/24	319 (300-½)	620/40	319 (300-¾)			
CIRCLING	940-1	599 (600-1)	940-1½ 599 (600-1½)	1020-2¼ 679 (700-2¼)	1140-2¾ 799 (800-2¾)		

SE-1, 31 DEC 2020 to 28 JAN 2021

SE-1, 31 DEC 2020 to 28 JAN 2021