

MARVELL SIX ARRIVAL

AL-253 (FAA)

MEMPHIS INTL (MEM)
MEMPHIS, TENNESSEE

SE-1, 31 DEC 2020 to 28 JAN 2021

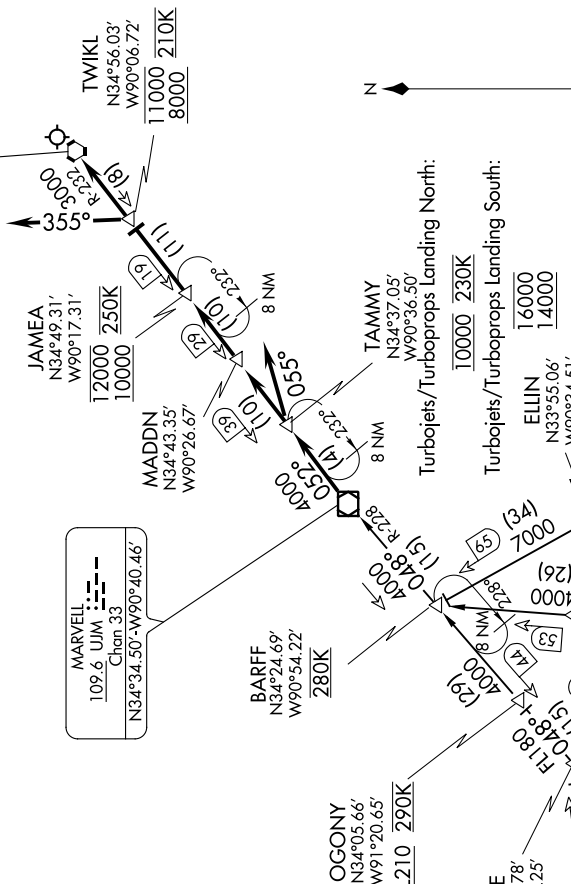
(NARRATIVE ON FOLLOWING PAGE)

MEMPHIS APP CON
119.1 291.6 (176°-355°)
125.8 338.3 (356°-175°)
D-ATIS 127.75

- NOTE: DME and radar required.
NOTE: Procedure not available for RNAV capable Turbojets.
NOTE: RNAV capable Turbojets must file the HOBK RNAV STAR.
NOTE: Maintain last assigned altitude until cleared to "descend via the MARVELL SIX," then comply with altitude restrictions as published.

MARVELL
109.6 UJM ---
Chan 33
N34°34.50'-W90°40.46'

MEMPHIS
117.5 MEM ---
Chan 122
N35°00.91'-
W89°58.99'



NOTE: Chart not to scale

SE-1, 31 DEC 2020 to 28 JAN 2021

MARVELL SIX ARRIVAL

MEMPHIS, TENNESSEE
MEMPHIS INTL (MEM)