

WAAS CH 40407 W36B	APP CRS 360°	Rwy Idg 10715 TDZE 341 Apt Elev 341
--	------------------------	--

RNAV (GPS) RWY 36C
MEMPHIS INTL (MEM)

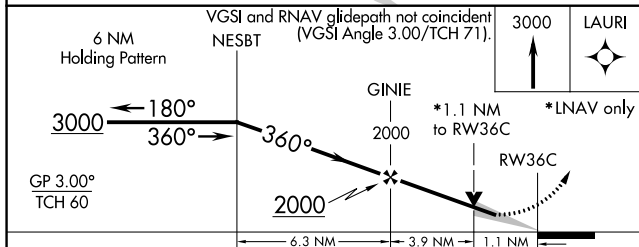
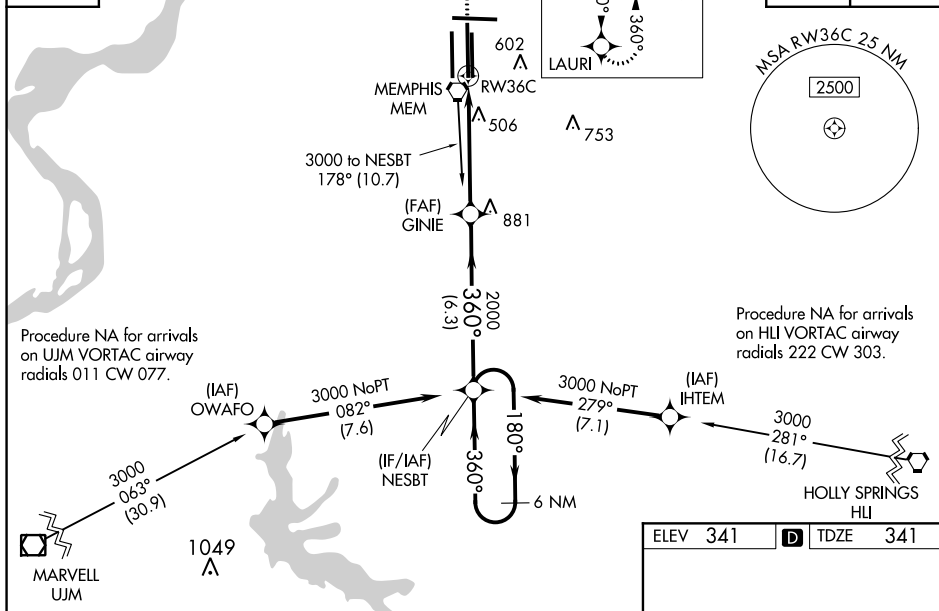
MEMPHIS INTL (MEM)


▼ For uncompensated Baro-VNAV systems, LNAV/VNAV NA below -15°C or above
▲ 54°C. Simultaneous approach authorized. For inop ALS increase LPV all Cats visibility to RVR 5000, increase LNAV Cat D visibility to RVR 6000. LNAV procedure NA during simultaneous operations. Use of FD or AP required during simultaneous operations.

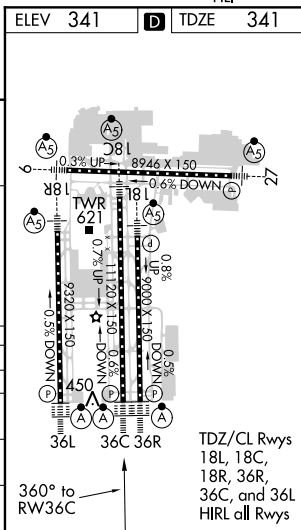
MISSED APPROACH:
Climb to 3000 direct
LAURI and hold.

MEMPHIS APP CON			MEMPHIS TOWER			GND CON		
119.1	291.6	(176°-355°)	(Rwy 9-27)	118.3	257.8	(Rwy 9-27)	121.0	379.2
125.8	338.3	(356°-175°)	(Rwys 18C-36C, 18L-36R)	119.7	257.8	(Rwys 18C-36C, 18L-36R)	121.9	379.2
			(Rwy 18R-36L)	128.425	257.8	(Rwy 18R-36L)	121.65	379.2

D-ATIS 127.75		MISSED APCH FIX	CLNC DEL 125.2	CPDLC
-------------------------	---	-----------------	--------------------------	-------



CATEGORY		A	B	C	D
LPV	DA	665/24 324 (400-½)			
LNAV/ VNAV	DA	765/50 424 (500-1)			
LNAV	MDA	760/24 419 (500-½)	760/40 419 (500-¾)	760/50 419 (500-1)	
 CIRCLING		940-1 599 (600-1)	940-1½ 599 (600-1½)	1020-2¼ 679 (700-2¼)	



SE-1, 31 DEC 2020 to 28 JAN 2021