
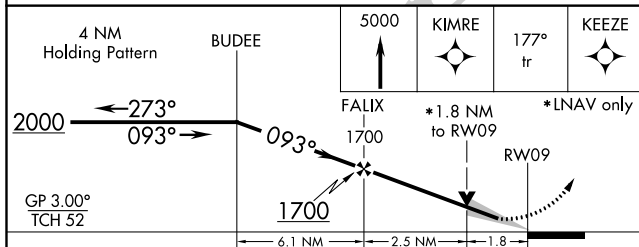
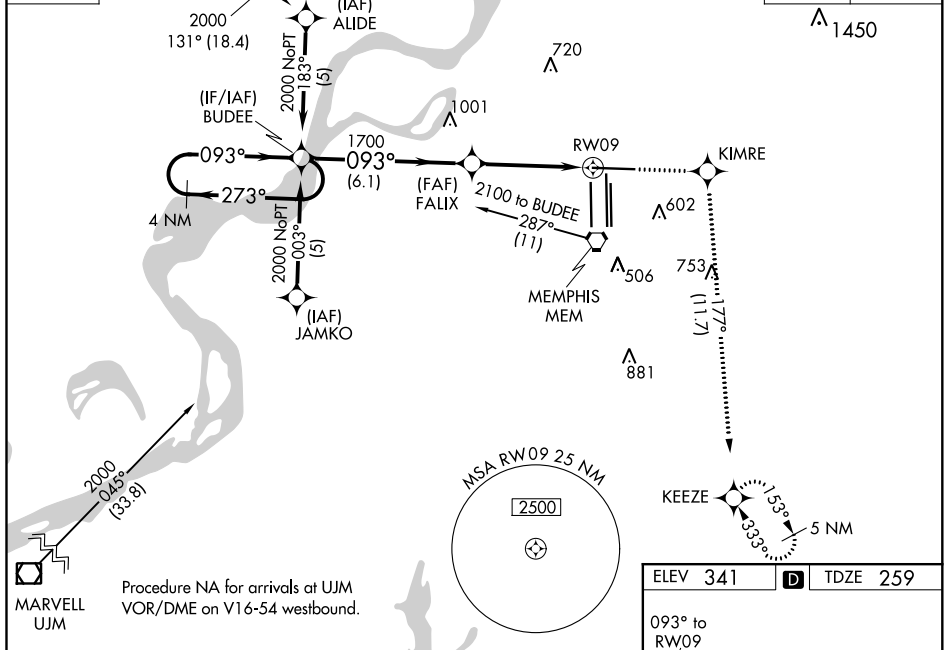


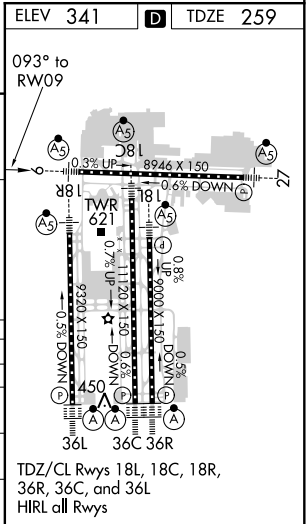
RNAV (GPS) RWY 9  
MEMPHIS INTL (MEM)

MEMPHIS APP CON			MEMPHIS TOWER			GND CON		
<b>119.1</b>	<b>291.6</b>	(176°-355°)	(Rwy 9-27)	<b>118.3</b>	<b>257.8</b>	(Rwy 9-27)	<b>121.0</b>	<b>379.2</b>
			(Rwys 18C-36C, 18L-36R)	<b>119.7</b>	<b>257.8</b>	(Rwys 18C-36C, 18L-36R)	<b>121.9</b>	<b>379.2</b>
<b>125.8</b>	<b>338.3</b>	(356°-175°)	(Rwy 18R-36L)	<b>128.425</b>	<b>257.8</b>	(Rwy 18R-36L)	<b>121.65</b>	<b>379.2</b>

D-ATIS <b>127.75</b>	GILMORE GQE		Procedure NA for arrivals at GQE VOR/DME on V159 northwest bound.	1337 $\Delta$	CLNC DEL <b>125.2</b>	CPDLC
-------------------------	----------------	---	--	---------------	--------------------------	-------



CATEGORY	A	B	C	D
LPV DA	557/24 298 (300-½)			
INAV/ VNAV DA	782/60 523 (500-1¼)			
INAV MDA	880/24 621 (600-½)		880/60 621 (600-1¼)	880-1½ 621 (600-1½)
<b>C</b> CIRCLING	940-1 599 (600-1)		940-1½ 599 (600-1½)	1020-2¼ 679 (700-2¼)



SE-1, 31 DEC 2020 to 28 JAN 2021

SE-1, 31 DEC 2020 to 28 JAN 2021