


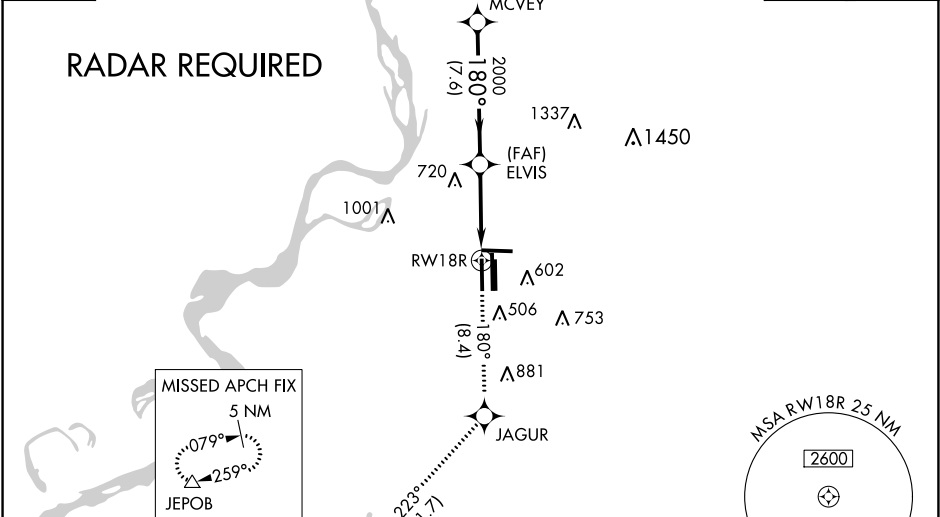
APP CRS	Rwy Idg	9320
180°	TDZE	295
	Apt Elev	341

RNAV (RNP) Y RWY 18R  
MEMPHIS INTL (MEM)

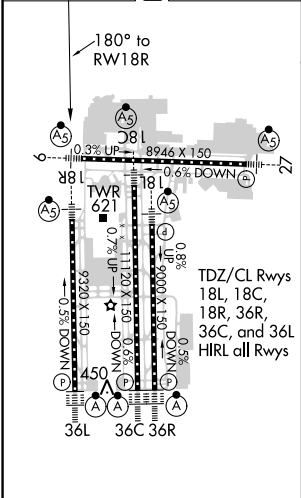
<p>▼ For uncompensated Baro-VNAV systems, procedure NA below -9°C (16°F) or above 48°C (118°F). Simultaneous approach authorized. GPS required. Use of FD or AP required during simultaneous operations. For inop ALS, increase RNP 0.19* all Cats visibility to RVR 6000 and RNP 0.30 all Cats visibility to 1½ SM.</p>	<p>MALSR</p> 	<p>MISSED APPROACH: Climb to 5000 on track 180° to JAGUR and on track 223° to JEPOB and hold. *Missed approach requires minimum climb of 425 feet per NM to 1000.</p>
--	--	---

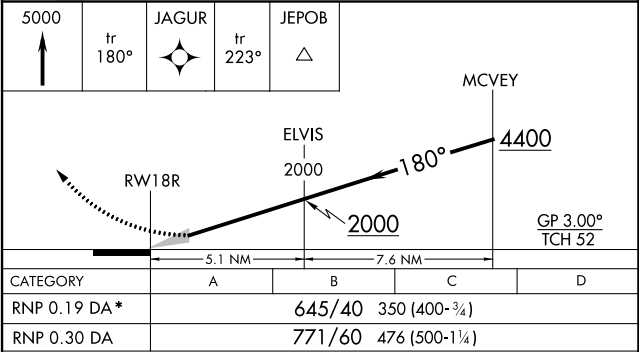
MEMPHIS APP CON	MEMPHIS TOWER	GND CON
119.1 291.6 (176°-355°)	(Rwy 9-27) 118.3 257.8	(Rwy 9-27) 121.0 379.2
125.8 338.3 (356°-175°)	(Rwys 18C-36C, 18L-36R) 119.7 257.8	(Rwys 18C-36C, 18L-36R) 121.9 379.2
	(Rwy 18R-36L) 128.425 257.8	(Rwy 18R-36L) 121.65 379.2

D-ATIS	CLNC DEL	CPDLC
127.75	125.2	



ELEV 341	D	TDZE 295
----------	---	----------



5000	↑	tr 180°	JAGUR	tr 223°	JEPOB
					
CATEGORY	A	B	C	D	
RNP 0.19 DA *		645/40	350 (400-¾)		
RNP 0.30 DA		771/60	476 (500-1¼)		

AUTHORIZATION REQUIRED