

WAAS CH <b>53307</b> <b>W18B</b>	APP CRS <b>180°</b>	Rwy Idg TDZE Apt Elev	<b>9000</b> <b>301</b> <b>341</b>
--	------------------------	-----------------------------	---

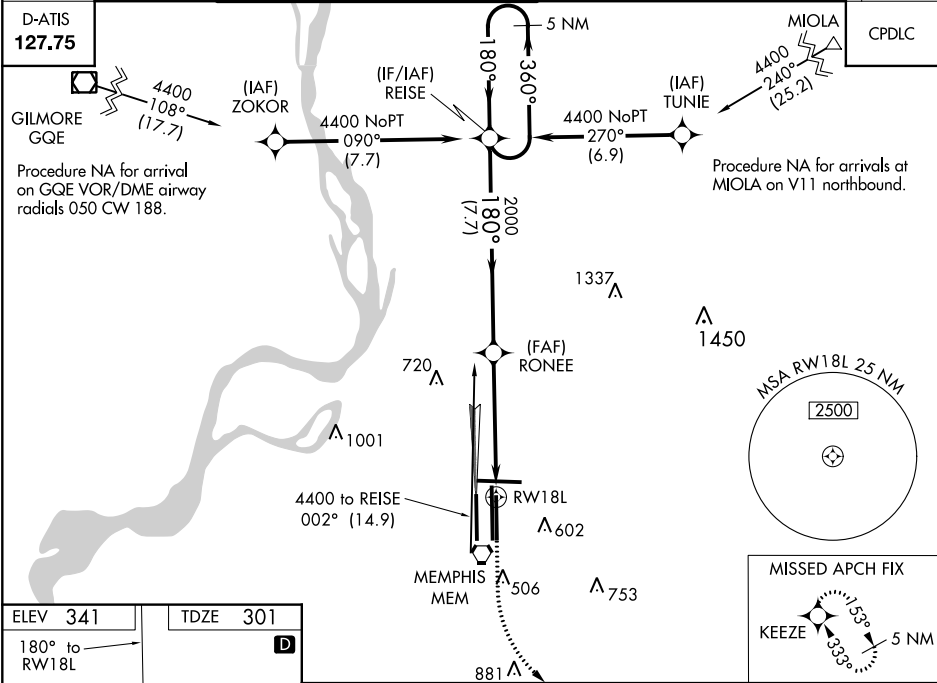
RNAV (GPS) Z RWY 18L  
MEMPHIS INTL (MEM)

**⚠** For uncompensated Baro-VNAV systems, LNAV/VNAV NA below -15°C (5°F) or above 48°C (118°F). Simultaneous approach authorized.  
**⚠** DME/DME RNP-0.3 NA. LNAV procedure NA during simultaneous operations. Use of FD or AP required during simultaneous operations.  
For inop ALS, increase LPV all Cats visibility to RVR 5000.

**MALSR**

**MISSED APPROACH:** Climb to 900 then climbing left turn to 5000 direct KEEZE and hold, continue climb-in-hold to 5000.

MEMPHIS APP CON		MEMPHIS TOWER		GND CON		CLNC DEL
<b>119.1</b>	<b>291.6</b> (176°-355°)	(Rwy 9-27)	<b>118.3 257.8</b>	(Rwy 9-27)	<b>121.0 379.2</b>	
<b>125.8</b>	<b>338.3</b> (356°-175°)	(Rwys 18C-36C, 18L-36R)	<b>119.7 257.8</b>	(Rwys 18C-36C, 18L-36R)	<b>121.9 379.2</b>	
		(Rwy 18R-36L)	<b>128.425 257.8</b>	(Rwy 18R-36L)	<b>121.65 379.2</b>	<b>125.2</b>



**ELEV 341** **TDZE 301**

**TDZ/CL** Rwys 18L, 18C, 18R, 36R, 36C, and 36L  
**HRL** all Rwys

900 ↑		5000 ↙		KEEZE ✦		VGSi and RNAV glidepath not coincident (VGSi Angle 3.00/TCH 73).			
						5 NM Holding Pattern			
*LNAV only.						REISE			
RW18L						360° → 4400 ← 180°			
*1.7 NM to RW18L						RONEE			
2000						2000			
1.7 NM						GP 3.00° TCH 60			
3.5 NM									
7.7 NM									
CATEGORY		A		B		C		D	
LPV DA				557/18		256 (300-½)			
LNAV/DA				874-1½		573 (600-1½)			
LNAV MDA		880/24		579 (600-½)		880/50 579 (600-1)		880/60 579 (600-1¼)	
CIRCLING		940-1		599 (600-1)		940-1½ 599 (600-1½)		1020-2¼ 679 (700-2¼)	

SE-1, 31 DEC 2020 to 28 JAN 2021

SE-1, 31 DEC 2020 to 28 JAN 2021