


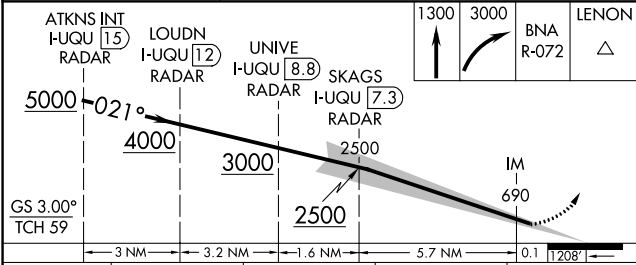
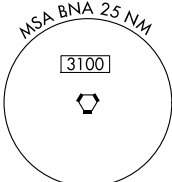
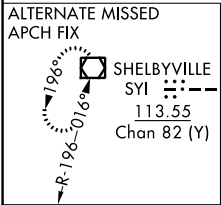
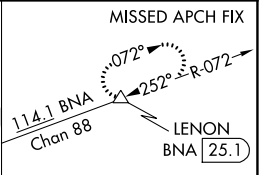
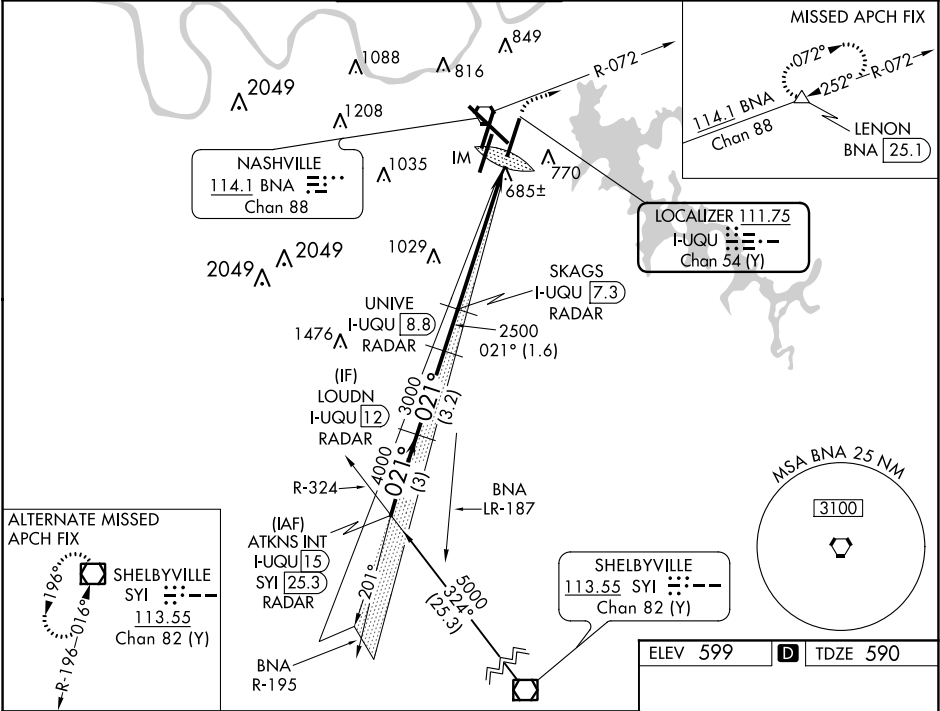


LOC/DME I-UQU <b>111.75</b> Chan <b>54</b> (Y)	APP CRS <b>021°</b>	Rwy Idg <b>8000</b> TDZE <b>590</b> Apt Elev <b>599</b>
--	------------------------	---

ILS RWY 2R (CAT II & III)  
NASHVILLE INTL (BNA)

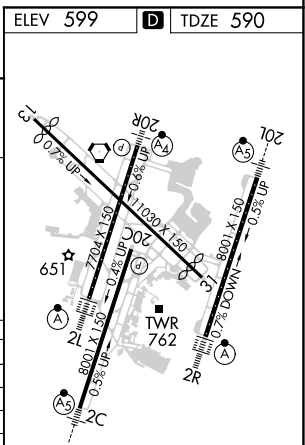
DME required. 	Simultaneous approach authorized with Rwy 2L/C. 	ALSf-2 	MISSED APPROACH: Climb to 1300 then climbing right turn to 3000 on BNA R-072 to LENON/BNA 25.1 DME and hold.
--	--	---	--

D-ATIS <b>135.1</b>	NASHVILLE APP CON <b>118.4 360.7</b>	NASHVILLE TOWER <b>118.6 257.8</b>	GND CON <b>121.9 348.6</b>	CLNC DEL <b>126.05</b>	CPDLC
------------------------	---	---------------------------------------	-------------------------------	---------------------------	-------



CATEGORY	A	B	C	D
S-ILS 2R	CAT II	RA 116/12	100	DA 690
S-ILS 2R		CAT IIIa	RVR 07	
S-ILS 2R		CAT IIIb	RVR 06	
S-ILS 2R		CAT IIIc	NA	

CATEGORY II & III ILS - SPECIAL AIRCREW  
& AIRCRAFT CERTIFICATION REQUIRED



HIRL all Rwy's  
TDZ/CL Rwy's 2L and 2R  
REIL Rwy's 13, 20C, and 31

SE-1, 31 DEC 2020 to 28 JAN 2021

SE-1, 31 DEC 2020 to 28 JAN 2021