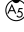


LOC/DME I-SSX 109.35 Chan 30 (Y)	APP CRS 201°	Rwy Idg TDZE Apt Elev 8000 551 599
---	------------------------	--

ILS or LOC/DME RWY 20L
NASHVILLE INTL (BNA)

Simultaneous approach authorized with Rwy 20R.
DME required.
**RVR 1800 authorized with the use of FD or AP or HUD to DA.

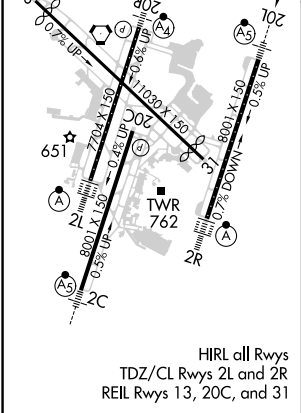
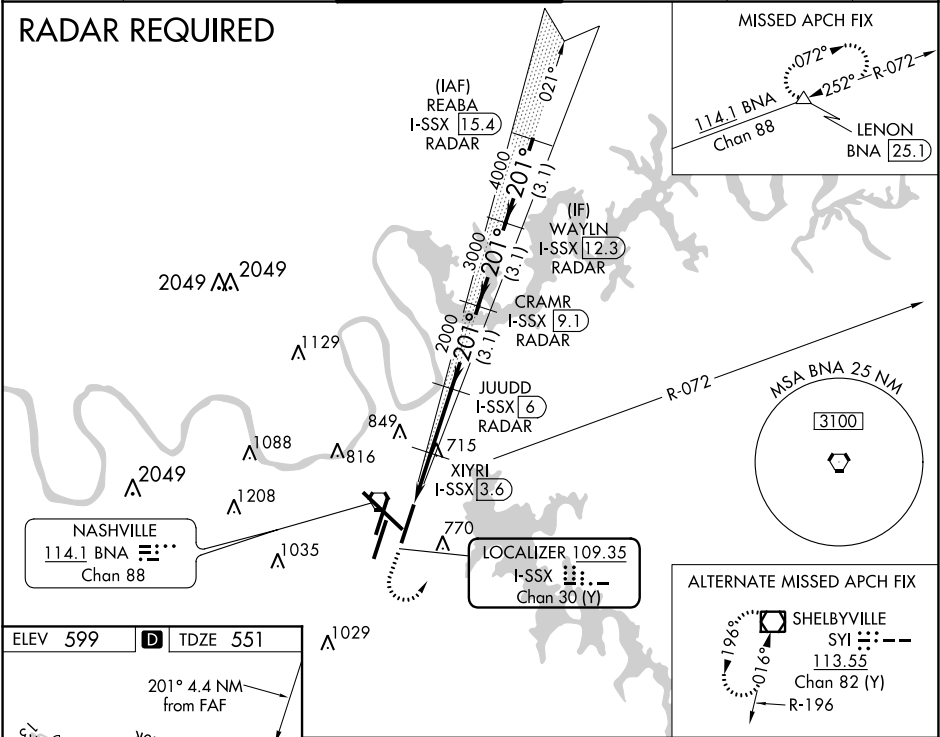
MALSR



MISSED APPROACH: Climb to 1300 then climbing left turn to 3000 on heading 040° and BNA VORTAC R-072 to LENON/BNA 25.1 DME and hold.

D-ATIS 135.1	NASHVILLE APP CON 118.4 360.7	NASHVILLE TOWER 118.6 257.8	GND CON 121.9 348.6	CLNC DEL 126.05	CPDLC
------------------------	---	---------------------------------------	-------------------------------	---------------------------	-------

RADAR REQUIRED



1300 ↑ hdg 040°	3000	BNA R-072	LENON △				
*LOC only.				CRAMR I-SSX 9.1 RADAR	WAYLN I-SSX 12.3 RADAR	REABA I-SSX 15.4 RADAR	
<p>201°</p> <p>5000</p> <p>4000</p> <p>3000</p> <p>2000</p> <p>1220*</p> <p>2000</p> <p>1.2</p> <p>0.8</p> <p>2.4 NM</p> <p>3.1 NM</p> <p>3.1 NM</p> <p>3.1 NM</p> <p>GS 3.00° TCH 47</p>							
CATEGORY	A		B		C		D
S-ILS 20L	** 751/24 200 (200-½)						
S-LOC 20L	980/24		429 (400-½)		980/40		429 (400-¾)
CIRCLING	1100-1 501 (600-1)		1120-1 521 (600-1)		1200-1¾ 601 (700-1¾)		1380-2½ 781 (800-2½)

SE-1, 31 DEC 2020 to 28 JAN 2021

SE-1, 31 DEC 2020 to 28 JAN 2021