

LOC/DME I-UQU
111.75
Chan **54** (Y)

APP CRS
021°

Rwy Idg **8000**
TDZE **590**
Apt Elev **599**

ILS or LOC/DME RWY 2R

NASHVILLE INTL (BNA)

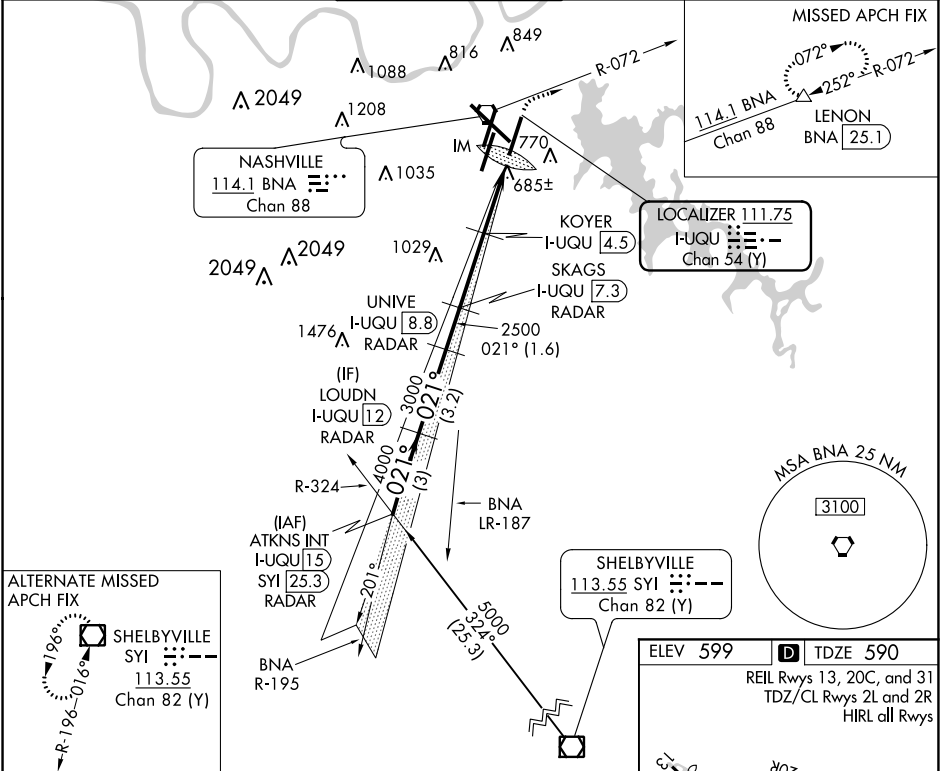
DME required.

Simultaneous approach authorized with Rwy 2L/C.
For inop ALSF, increase S-LOC 2R Cats C/D visibility to RVR 5500.

ALSF-2

MISSED APPROACH: Climb to 1300 then climbing right turn to 3000 on BNA R-072 to LENON/BNA 25.1 DME and hold.

D-ATIS 135.1	NASHVILLE APP CON 118.4 360.7	NASHVILLE TOWER 118.6 257.8	GND CON 121.9 348.6	CLNC DEL 126.05	CPDLC
------------------------	---	---------------------------------------	-------------------------------	---------------------------	-------



ATKNS INT I-UQU [15] RADAR	LOUDN I-UQU [12] RADAR	UNIVE I-UQU [8.8] RADAR	SKAGS I-UQU [7.3] RADAR	KOYER I-UQU [4.5] RADAR	BNA R-072	LENON
5000	4000	3000	2500	1600	1300	3000
GS 3.00° TCH 59	021°	021°	021°	021°	021°	021°
3 NM	3.2 NM	1.6 NM	2.8 NM	2.1 NM	0.8 NM	0.1 NM
CATEGORY	A	B	C	D		
S-ILS 2R		790/18	200 (200-½)			
S-LOC 2R	940/24	350 (400-½)	940/30	350 (400-¾)		
CIRCLING	1100-1 501 (600-1)	1120-1 521 (600-1)	1200-1¾ 601 (700-1¾)	1380-2½ 781 (800-2½)		

