

WAAS CH 70613 W02B	APP CRS 021°	Rwy Idg TDZE Apt Elev	7601 587 599
--	------------------------	-----------------------------	---

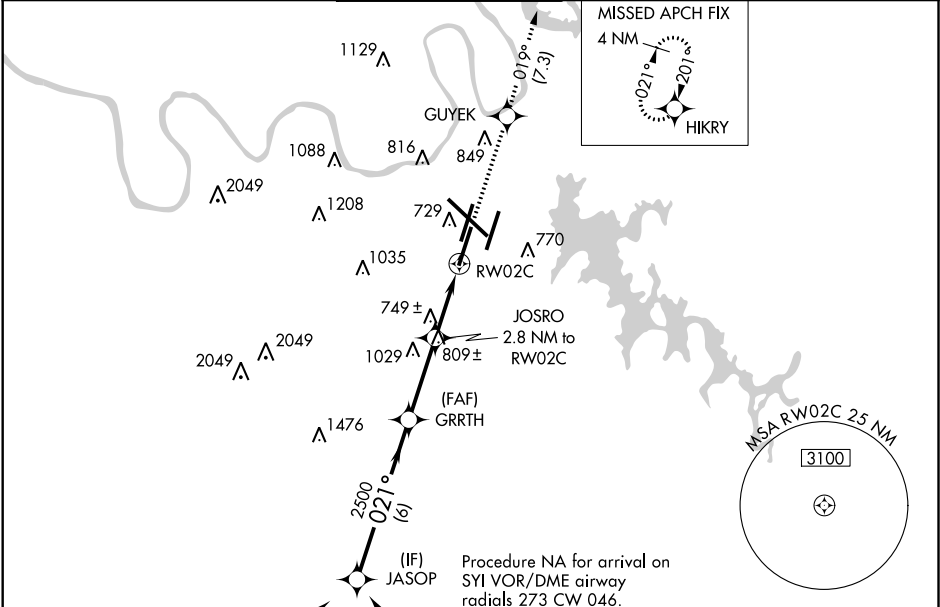
RNAV (GPS) Y RWY 2C
NASHVILLE INTL (BNA)

⚠ For uncompensated Baro-VNAV systems, LNAV/VNAV NA below -11°C (13°F) or above 54°C (130°F). Use of FD or AP providing RNAV track guidance required during simultaneous operations. LNAV procedure NA during simultaneous operations. Simultaneous approach authorized with Rwy 2R. DME/DME RNP-0.3 NA. ** RVR 1800 authorized with use of FD or AP or HUD to DA.

MALSR

MISSED APPROACH: Climb to 4000 direct GUYEK and on track 019° to HIKRY and hold, continue climb-in-hold to 4000.

D-ATIS 135.1	NASHVILLE APP CON 118.4 360.7	NASHVILLE TOWER 118.6 257.8	GND CON 121.9 348.6	CLNC DEL 126.05	CPDLC
------------------------	---	---------------------------------------	-------------------------------	---------------------------	-------



ELEV 599		TDZE 587	
*LNAV only			
GP 3.00° TCH 60			
JASOP 3000 021° 2500 1520 1.2 NM to RWY 2C			
GRRTH 2500 3.1 NM to RWY 2C			
JOSRO 2.8 NM to RWY 2C			
RWY 2C 1.2 NM to RWY 2C			
CATEGORY A B C D			
LPV DA** 787/24 200 (200-1/2)			
LNAV/VNAV DA 1059/60 472 (500-1/4)			
LNAV MDA 1000/24 413 (500-1/2) 1000/40 413 (500-3/4)			
CIRCLING 1100-1 501 (600-1) 1120-1 521 (600-1) 1200-1 3/4 601 (700-1 3/4) 1380-2 1/2 781 (800-2 1/2)			

SE-1, 31 DEC 2020 to 28 JAN 2021

SE-1, 31 DEC 2020 to 28 JAN 2021