

WAAS CH 42713 W02A	APP CRS 021°	Rwy Idg TDZE Apt Elev	7702 599 599
--	------------------------	-----------------------------	---

RNAV (GPS) Y RWY 2L

NASHVILLE INTL (BNA)

⚠

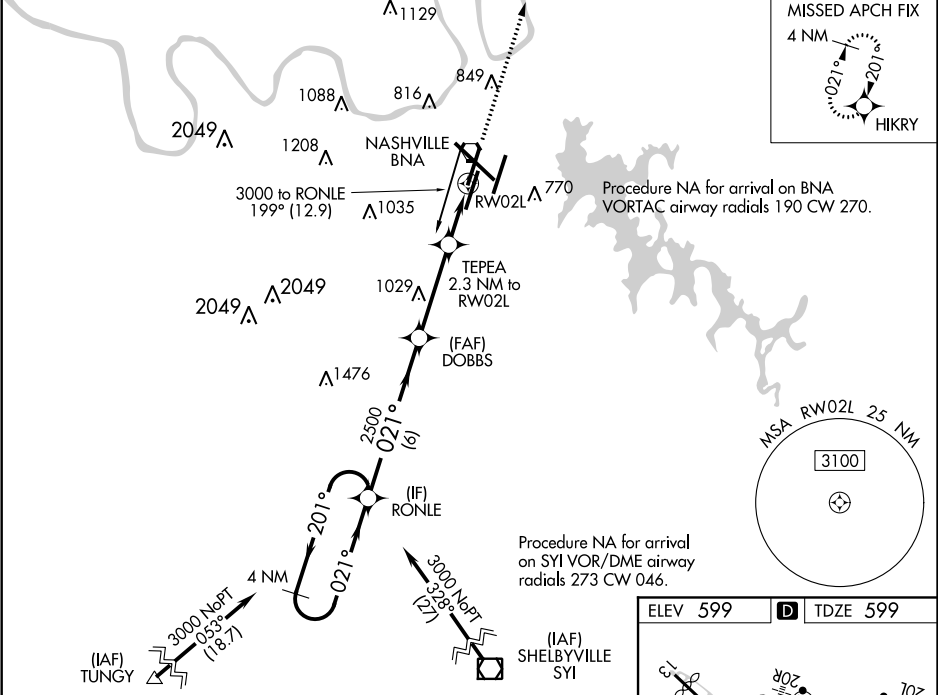
For uncompensated Baro-VNAV systems, LNAV/VNAV NA below -11°C (13°F) or above 54°C (130°F). Use of FD or AP providing RNAV track guidance required during simultaneous operations. LNAV procedure NA during simultaneous operations. Simultaneous approach authorized with Rwy 2R.
DME/DME RNP-0.3 NA.

ALSF-2

MISSED APPROACH:

Climb to 4000 direct HIKRY and hold, continue climb-in-hold to 4000.

D-ATIS 135.1	NASHVILLE APP CON 118.4 360.7	NASHVILLE TOWER 118.6 257.8	GND CON 121.9 348.6	CLNC DEL 126.05	CPDLC
------------------------	---	---------------------------------------	-------------------------------	---------------------------	-------



4 NM Holding Pattern		RONLE		DOBBS		TEPEA 2.3 NM to RW02L		4000	HIKRY
3000 ← 201°		021° →		2500		*1.2 NM to RW02L		*LNAV only.	
GP 3.00° TCH 55		2500		*1380		RW02L			
		6 NM		3.5 NM		1.1 NM		1.2 NM	
CATEGORY	A		B		C		D		
LPV DA			799/18		200 (200-½)				
LNAV/VNAV DA			949/30		350 (400-⅝)				
LNAV MDA	1020/24		421 (500-½)		1020/40		421 (500-¾)		
CIRCLING	1100-1 501 (600-1)		1120-1 521 (600-1)		1200-1¾ 601 (700-1¾)		1380-2½ 781 (800-2½)		

