

WAAS  
CH **93713**  
**W02D**

APP CRS  
**021°**

Rwy Idg  
TDZE **590**  
Apt Elev **599**

**RNAV (GPS) Y RWY 2R**

NASHVILLE INTL (BNA)

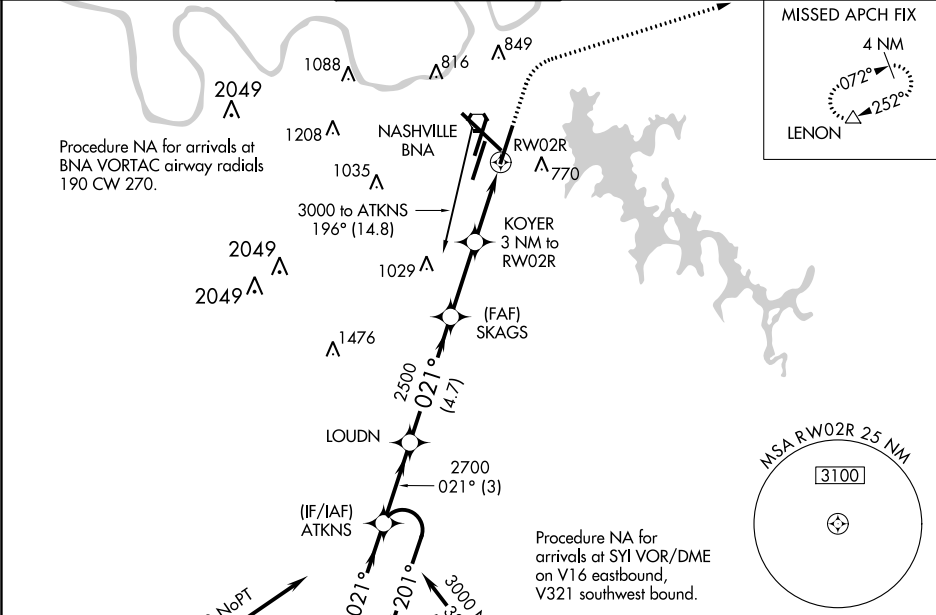
RNP APCH.

For uncompensated Baro-VNAV systems, LNAV/VNAV NA below -11°C or above 54°C. Simultaneous approach authorized with Rwy 2L/C. LNAV procedure NA during simultaneous operations. Use of FD or AP providing RNAV track guidance required during simultaneous operations. For inop ALSF-2 increase LNAV/VNAV visibility all Cats to RVR 5400.

ALSF-2

MISSED APPROACH: Climb to 1300 then dimbing right turn to 4000 direct LENON and hold.

D-ATIS	NASHVILLE APP CON	NASHVILLE TOWER	GND CON	CLNC DEL	CPDLC
135.1	118.4 360.7	118.6 257.8	121.9 348.6	126.05	



ELEV 599    TDZE 590

HIRL all Rwys  
TDZ/CL Rws 2L and 2R  
REIL Rws 13, 20C, and 31

CATEGORY	A	B	C	D
LPV DA		790/18	200 (200-½)	
LNAV/VNAV DA		928/30	338 (400-¾)	
LNAV MDA	1020/24	430 (500-½)	1020/40	430 (500-¾)
CIRCLING	1100-1 501 (600-1)	1120-1 521 (600-1)	1200-1¾ 601 (700-1¾)	1380-2½ 781 (800-2½)

4 NM Holding Pattern    ATKNS    LOUDN    SKAGS    KOYER 3 NM to RWY 2R    \*1.1 NM to RWY 2R    RWY 2R

GP 3.00° TCH 59

3000    201°    021°    2700    2500    \*1600

3 NM    4.7 NM    2.8    1.9    1.1

\*LNAV only