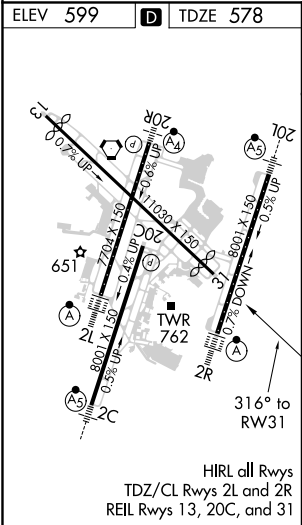
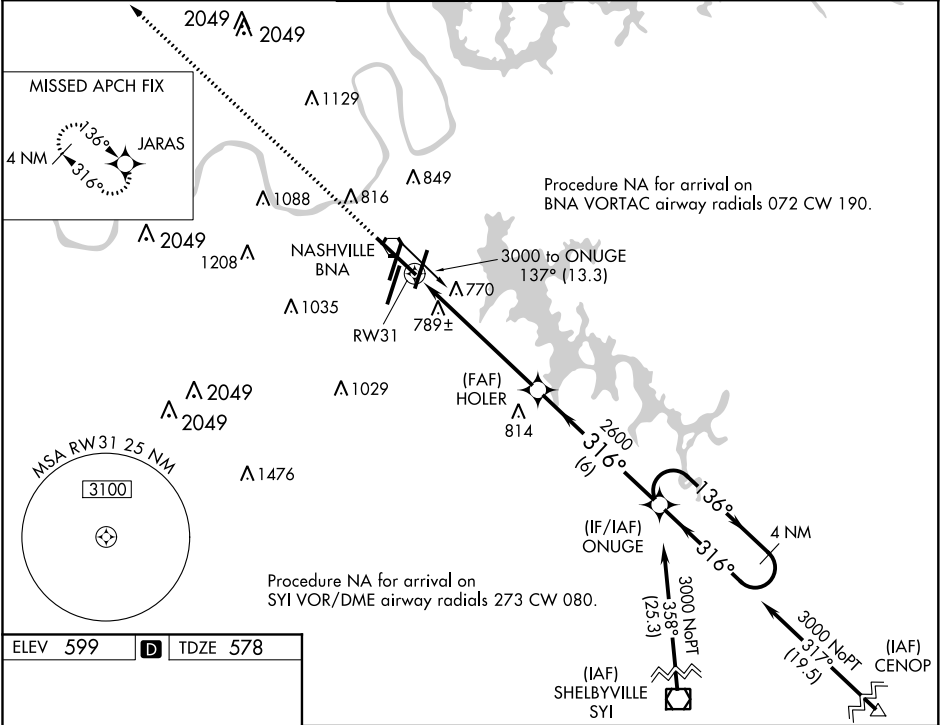




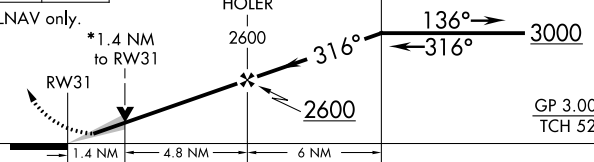
WAAS CH <b>65913</b> <b>W31A</b>	APP CRS <b>316°</b>	Rwy Idg TDZE Apt Elev	<b>9487</b> <b>578</b> <b>599</b>
--	------------------------	-----------------------------	---

RNAV (GPS) Y RWY 31  
NASHVILLE INTL (BNA)

 For uncompensated Baro-VNAV systems, LNAV/VNAV NA below -11°C (13°F) or above 54°C (130°F). DME/DME RNP-0.3 NA.	MISSED APPROACH: Climb to 3100 direct JARAS and hold.
---	---

D-ATIS <b>135.1</b>	NASHVILLE APP CON <b>118.4 360.7</b>	NASHVILLE TOWER <b>118.6 257.8</b>	GND CON <b>121.9 348.6</b>	CLNC DEL <b>126.05</b>	CPDLC
------------------------	---	---------------------------------------	-------------------------------	---------------------------	-------



3100	JARAS					4 NM Holding Pattern	
							
*LNAV only.							
*1.4 NM to RW31							
							
1.4 NM		4.8 NM		6 NM			
CATEGORY		A		B		C	D
LPV DA		778-3/4		200 (200-3/4)			
LNAV/VNAV DA		1061-1 5/8		483 (500-1 5/8)			
LNAV MDA		1060-1 482 (500-1)		1060-1 3/8 482 (500-1 3/8)			
CIRCLING		1100-1 501 (600-1)		1120-1 521 (600-1)		1200-1 3/4 601 (700-1 3/4) 1380-2 1/2 781 (800-2 1/2)	

SE-1, 31 DEC 2020 to 28 JAN 2021

SE-1, 31 DEC 2020 to 28 JAN 2021