

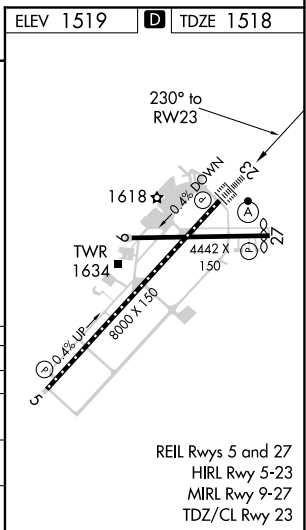
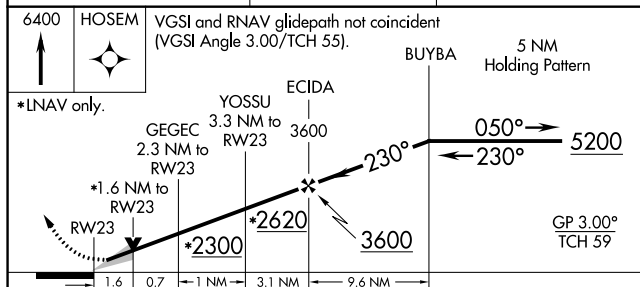
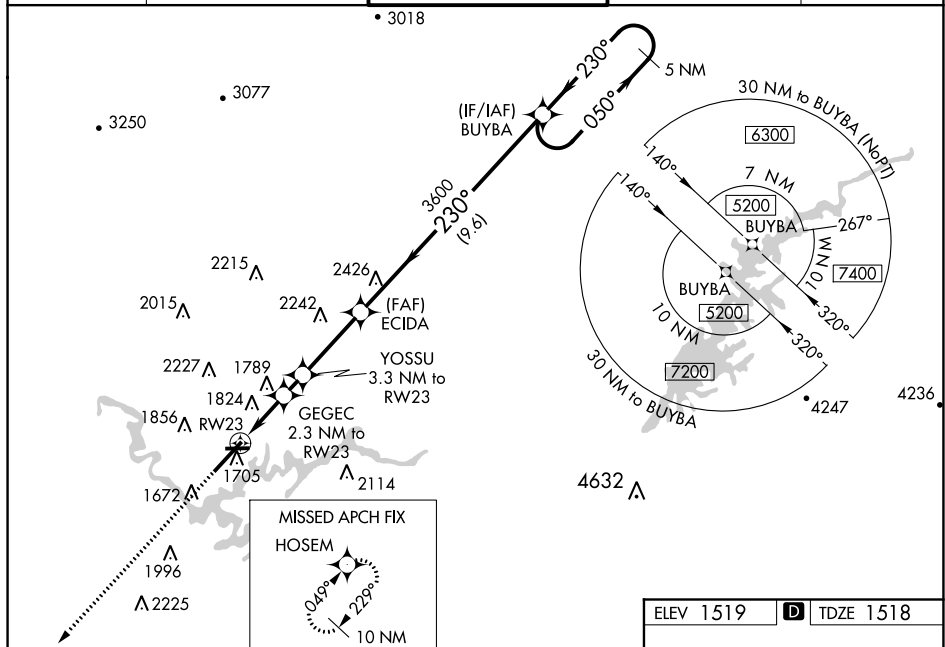
RNAV (GPS) RWY 23
TRI-CITIES (TRI)


T For uncompensated Baro-VNAV systems, LNAV/VNAV NA below -13°C (9°F) or above
A 34°C (93°F). Circling NA NW of Rwy 9-23. For inoperative ALS, increase LNAV Cats C
 and D visibility to 1½ SM. Circling Rwy 9 NA at night.



MISSED APPROACH: Climb to 6400 direct HOSEM and hold, continue climb-in-hold to 6400.

ATIS 118.25	TRI-CITY APP CON ★ 134.425 349.0	TRI-CITY TOWER ★ 119.5 (CTAF) 257.8	GND CON 121.7 348.6	UNICOM 122.95
----------------	-------------------------------------	--	------------------------	------------------



CATEGORY		A	B	C	D
LPV	DA	1718/18		200 (200-½)	
LNAV/ VNAV	DA	2160-1¾		642 (700-1¾)	
LNAV MDA		2080/24 562 (600-½)		2080-1¼ 562 (600-1¼)	
 CIRCLING		2120-1 601 (700-1)	2180-1 661 (700-1)	2300-2 ¼ 781 (800-2¼)	2500-3 981 (1000-3)

SE-1, 31 DEC 2020 to 28 JAN 2021

SE-1, 31 DEC 2020 to 28 JAN 2021