

WAAS CH <b>65726</b> <b>W05A</b>	APP CRS <b>050°</b>	Rwy Idg TDZE Apt Elev	<b>8000</b> <b>1498</b> <b>1519</b>
--	------------------------	-----------------------------	---

RNAV (GPS) RWY 5  
TRI-CITIES (TRI)

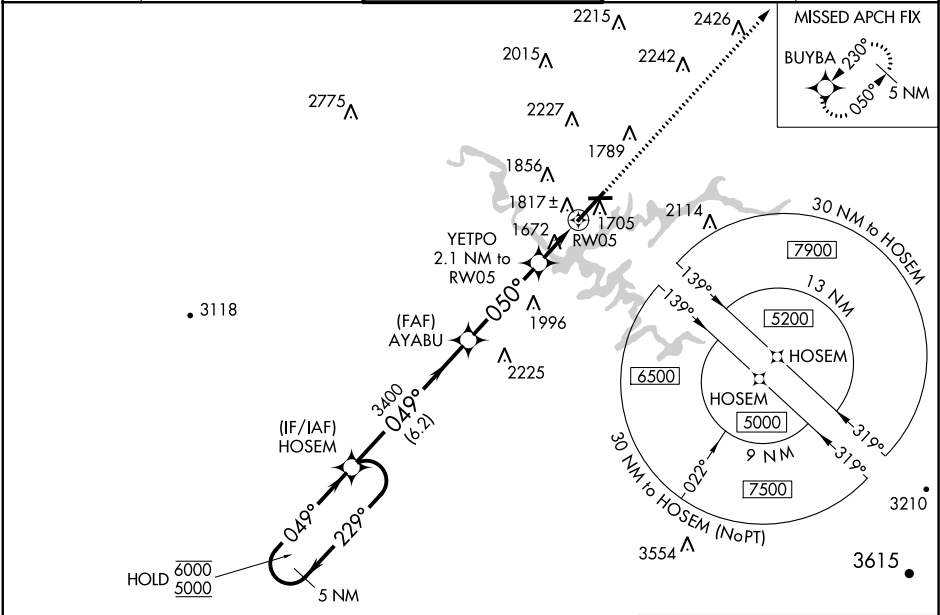
RNP APCH.

⚠

Circling to Rwy 9 NA at night. Circling NA northwest of Rwys 9 and 23. For uncompensated Baro-VNAV systems, LNAV/VNAV NA below -13°C or above 34°C.

MISSED APPROACH: Climb to 5200 direct BUYBA and hold.

ATIS <b>118.25</b>	TRI-CITY APP CON ★ <b>134.425 349.0</b>	TRI-CITY TOWER ★ <b>119.5 (CTAF) 257.8</b>	GND CON <b>121.7 348.6</b>	UNICOM <b>122.95</b>
-----------------------	--	---	-------------------------------	-------------------------



5 NM Holding Pattern

HOSEM

6000 ← 229°

5000 → 049°

GP 3.00° TCH 58

AYABU 3400

YETPO 2.1 NM to RW05

RW05

5200 BUYBA

\*LNAV only.

6.2 NM

3.7 NM

2.1 NM

CATEGORY	A	B	C	D
LPV DA		1698/40	200 (200-¾)	
LNAV/VNAV DA		1998-1¾	500 (500-1¾)	
LNAV MDA	2080/55	582 (600-1)	2080-1¾	582 (600-1¾)
CIRCLING	2120-1 601 (700-1)	2180-1 661 (700-1)	2320-2¼ 801 (900-2¼)	2500-3 981 (1000-3)

ELEV 1519

TDZE 1498

TWR 1634

1618

4442 X 150

8000 X 150

050° to RW05

REIL Rwys 5 and 27

HIRL Rwy 5-23

MIRL Rwy 9-27

TDZ/CL Rwy 23

SE-1, 31 DEC 2020 to 28 JAN 2021

SE-1, 31 DEC 2020 to 28 JAN 2021