

LOC I-PAH <b>108.5</b>	APP CRS <b>045°</b>	Rwy Idg <b>6500</b> TDZE <b>410</b> Apt Elev <b>410</b>
---------------------------	------------------------	---

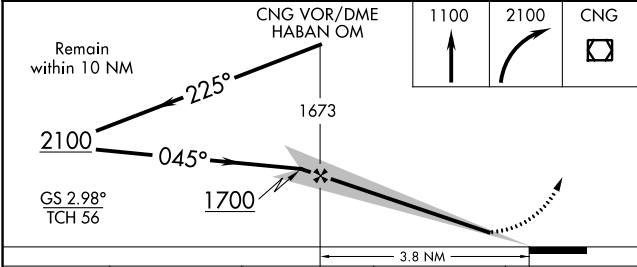
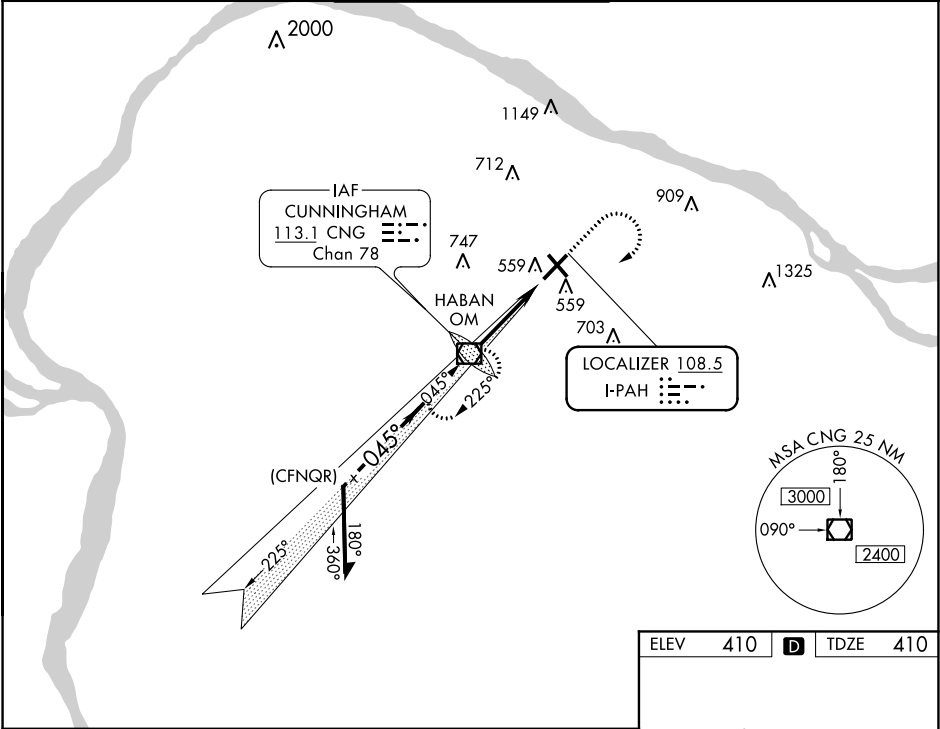
ILS or LOC RWY 4  
BARKLEY RGNL (PAH)

**⚠** Circling to Rwy 14 NA at night. When local altimeter setting not received, use Mayfield altimeter setting and increase DA to 671, and all MDA 80 feet, and increase S-LOC 4 Cat C, D visibility 1/8 mile.

**MALSR**

**MISSED APPROACH:** Climb to 1100 then climbing right turn to 2100 direct CNG VOR/DME and hold.

ASOS <b>118.375</b>	MEMPHIS CENTER <b>133.65 292.15</b>	PADUCAH TOWER ★ <b>119.6 (CTAF) 306.9</b>	GND CON <b>121.7 306.9</b>	UNICOM <b>122.95</b>
------------------------	--	--	-------------------------------	-------------------------



ELEV 410	<b>D</b>	TDZE 410
----------	----------	----------

045° 3.8 NM from FAF	HIRL Rwy 4-22
	MRL Rwy 14-32
	REIL Rwy 22 and 32
FAF to MAP 3.8 NM	
Knots	60 90 120 150 180
Min:Sec	3:48 2:32 1:54 1:31 1:16

SE-1, 31 DEC 2020 to 28 JAN 2021

SE-1, 31 DEC 2020 to 28 JAN 2021