

WAAS CH 48933 W14A	APP CRS 140°	Rwy Idg TDZE Apt Elev	5399 401 410
--	------------------------	-----------------------------	---

RNAV (GPS) RWY 14

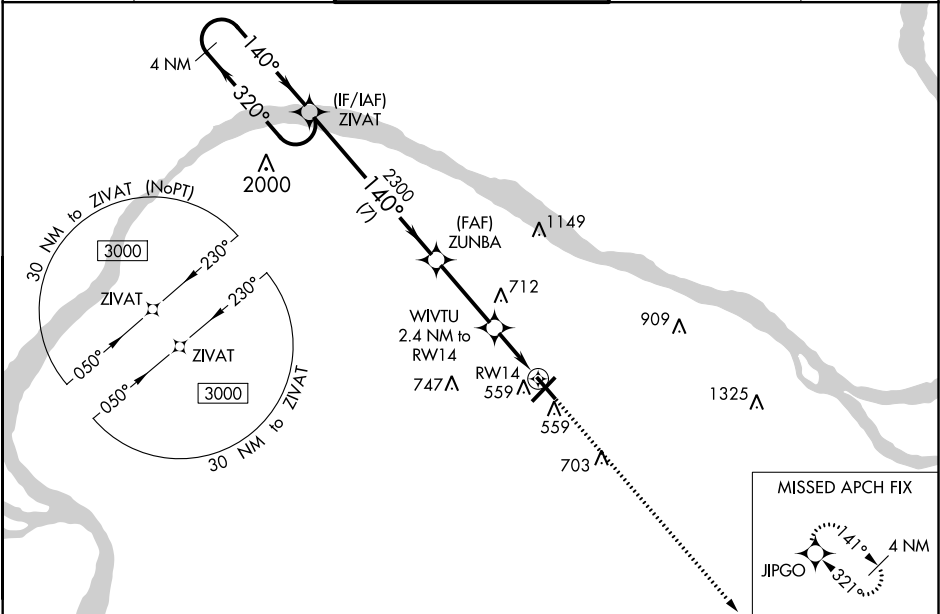
BARKLEY RGNL (PAH)

⚠

Baro-VNAV NA when using Mayfield altimeter setting. For uncompensated Baro-VNAV systems, LNAV/VNAV NA below -15°C (5°F) or above 45°C (114°F). DME/DME RNP-0.3 NA. When local altimeter setting not received, use Mayfield altimeter setting and increase all DA 61 feet and all MDA 80 feet, increase LPV and LNAV/VNAV all Cats, LNAV Cats C and D and Circling Cat D visibility ½ mile. Helicopter visibility reduction below 1 SM NA. Straight-in/Circling Rwy 14 procedure NA at night.

MISSED APPROACH:
Climb to 3000 direct JIPGO and hold.

ASOS 118.375	MEMPHIS CENTER 133.65 292.15	PADUCAH TOWER ★ 119.6 (CTAF) 306.9	GND CON 121.7 306.9	UNICOM 122.95
------------------------	--	--	-------------------------------	-------------------------



4 NM Holding Pattern

3000 ← 320°

140° →

ZIVAT

2300

ZUNBA

2300

WIVTU

2.4 NM to RWY14

RWY14

1200*

GP 3.10°

TCH 60

7 NM

3.2 NM

2.4

ELEV 410

TDZE 401

3000 JIPGO

↑

★ LNAV only

140° to RWY14

0.3° UP

0.4° UP

22

473

TWR 466

45

CATEGORY	A	B	C	D
LPV DA	724-1		323 (400-1)	
LNAV/VNAV DA	726-1		325 (400-1)	
LNAV MDA	800-1	399 (400-1)	800-1½	399 (400-1½)
CIRCLING	880-1	470 (500-1)	880-1½ 470 (500-1½)	1100-2 690 (700-2)

HIRL Rwy 4-22

MIRL Rwy 14-32

REIL Rwy 22 and 32

SE-1, 31 DEC 2020 to 28 JAN 2021

SE-1, 31 DEC 2020 to 28 JAN 2021