

WAAS CH <b>93701</b> <b>W04A</b>	APP CRS <b>045°</b>	Rwy Idg <b>6500</b> TDZE <b>410</b> Apt Elev <b>410</b>
--	------------------------	---

RNAV (GPS) RWY 4

BARKLEY RGNL (PAH)

▼

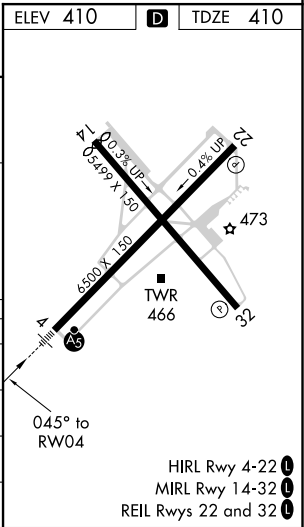
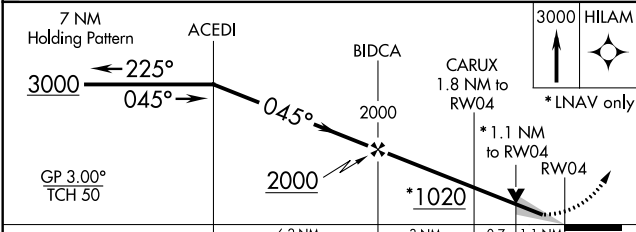
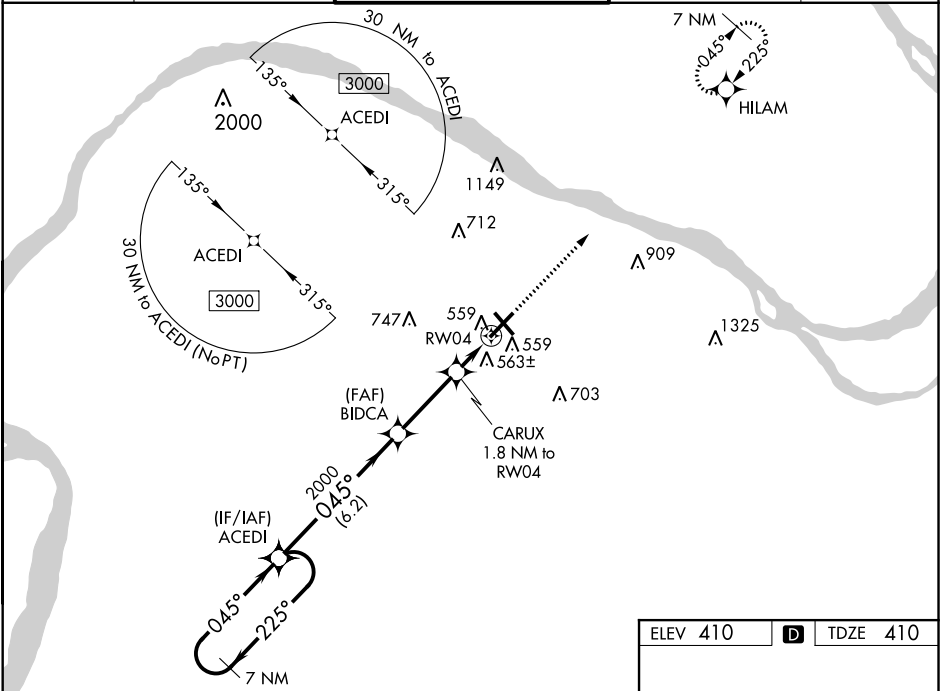
▲

For uncompensated Baro-VNAV systems, LNAV/VNAV NA below -14°C (7°F) or above 54°C (130°F). Baro-VNAV and VDP NA when using Mayfield altimeter setting. DME/DME RNP-0.3 NA. For inop MALS, increase LNAV Cat C/D visibility to 1 1/8 SM. When local altimeter setting not received, use Mayfield altimeter and increase LPV DA to 671, LNAV/VNAV DA to 899, and all MDA 80 feet; increase LNAV/VNAV all Cats, Circling Cat D, and LNAV Cats C/D visibility 1/4 mile.

MALS

MISSED APPROACH:  
Climb to 3000 direct  
HILAM and hold.

ASOS <b>118.375</b>	MEMPHIS CENTER <b>133.65 292.15</b>	PADUCAH TOWER ★ <b>119.6 (CTAF) 306.9</b>	GND CON <b>121.7 306.9</b>	UNICOM <b>122.95</b>
------------------------	--	--	-------------------------------	-------------------------



CATEGORY	A	B	C	D
LPV DA		610-1/2	200 (200-1/2)	
LNAV/ VNAV DA		838-3/4	428 (500-3/4)	
LNAV MDA	820-1/2	410 (500-1/2)	820-3/4	410 (500-3/4)
CIRCLING	900-1	490 (500-1)	900-1 1/2	1100-2 1/4

SE-1, 31 DEC 2020 to 28 JAN 2021

SE-1, 31 DEC 2020 to 28 JAN 2021