

VOR/DME CNG	APP CRS	Rwy Idg	6500
113.1	221°	TDZE	402
Chan 78		Apt Elev	410

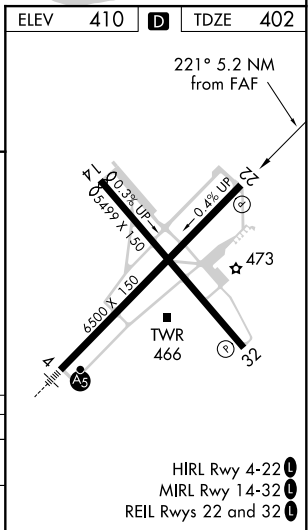
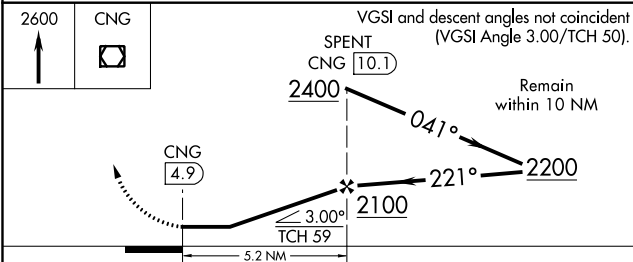
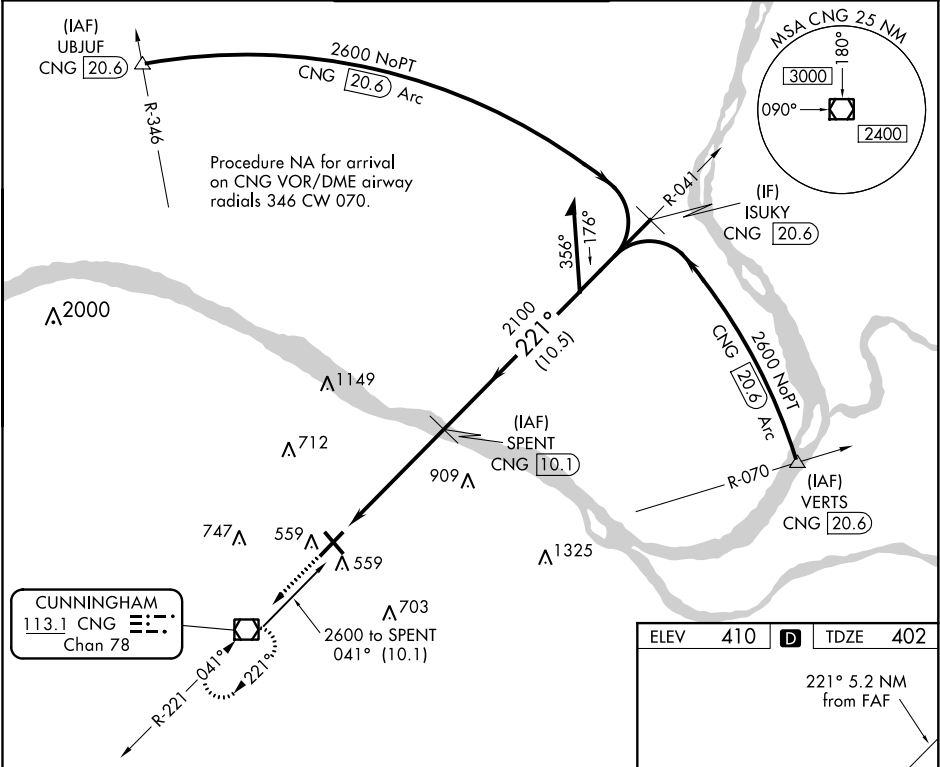
VOR/DME RWY 22  
BARKLEY RGNL (PAH)

**⚠** Circling to Rwy 14 NA at night. Helicopter visibility reduction below  $\frac{3}{4}$  SM NA.

**⚠** When local altimeter setting not received, use Mayfield altimeter setting and increase all MDA 80 feet and increase S-22 Cat C, D visibility  $\frac{1}{2}$  mile and Circling Cat C visibility  $\frac{1}{8}$  mile.

**MISSED APPROACH:** Climb to 2600 direct CNG VOR/DME and hold, continue climb-in-hold to 2600.

ASOS 118.375	MEMPHIS CENTER 133.65 292.15	PADUCAH TOWER ★ 119.6 (CTAF) 306.9	GND CON 121.7 306.9	UNICOM 122.95
-----------------	---------------------------------	---------------------------------------	------------------------	------------------



CATEGORY	A	B	C	D
S-22	860-1 458 (500-1)		860-1 $\frac{3}{8}$ 458 (500-1 $\frac{3}{8}$ )	
CIRCLING	900-1 490 (500-1)		900-1 $\frac{1}{2}$ 490 (500-1 $\frac{1}{2}$ )	960-2 550 (600-2)

SE-1, 31 DEC 2020 to 28 JAN 2021

SE-1, 31 DEC 2020 to 28 JAN 2021