

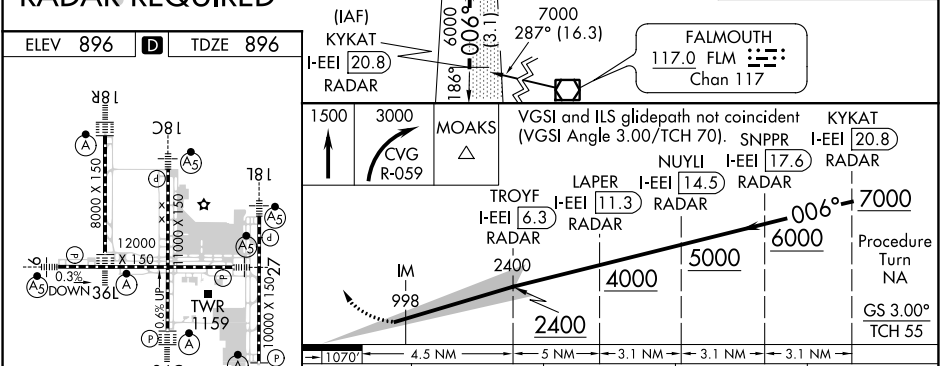
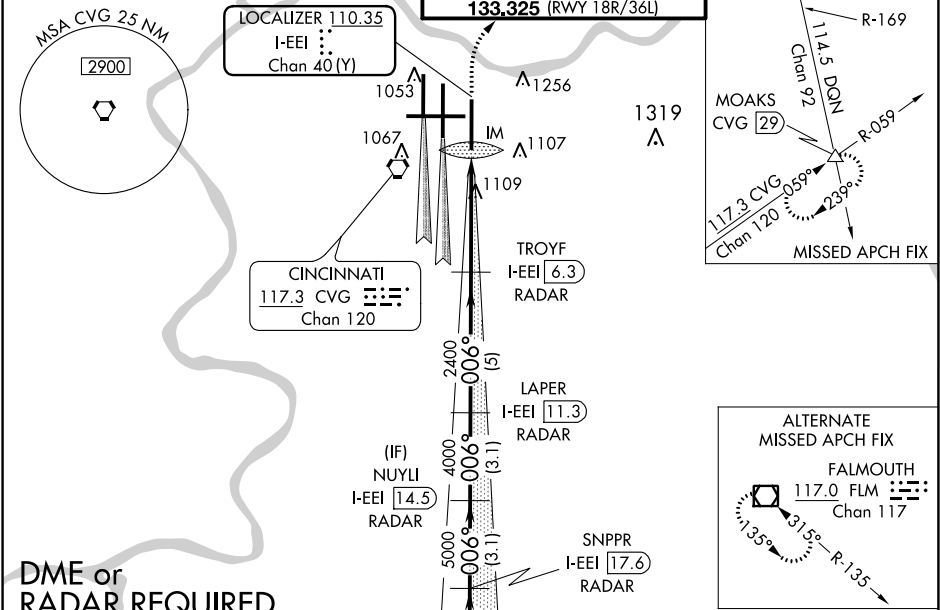
LOC/DME I-EEI 110.35 Chan 40 (Y)	APP CRS 006°	Rwy Idg TDZE 896 Apt Elev 896	ILS RWY 36R (CAT II & III) CINCINNATI/NORTHERN KENTUCKY INTL (CVG)
--	------------------------	---	--

Simultaneous approach authorized with Rwy 36C and 36L. DME or radar required.

ALSF-2

MISSED APPROACH: Climb to 1500 then climbing right turn to 3000 via CVG R-059 to MOAKS Int/CVG 29 DME and hold.

D-ATIS ARR 134.375 DEP 135.3	CINCINNATI APP CON 119.7 363.15 (090°-269°) 123.875 363.15 (270°-089°)	CINCINNATI TOWER 118.975 360.85 (RWY 18L/36R) 118.3 (RWYS 18C/36C, 09/27) 133.325 (RWY 18R/36L)	GND CON 121.7	CLNC DEL 127.175
---	--	---	-------------------------	----------------------------



CATEGORY	A	B	C	D
S-ILS 36R	CAT II RA 98/12 100 DA 996			
S-ILS 36R	CAT IIIa RVR 07			
S-ILS 36R	CAT IIIb RVR 06			
S-ILS 36R	CAT IIIc NA			

CATEGORY II & III ILS - SPECIAL AIRCREW & AIRCRAFT CERTIFICATION REQUIRED

SE-1, 31 DEC 2020 to 28 JAN 2021

SE-1, 31 DEC 2020 to 28 JAN 2021