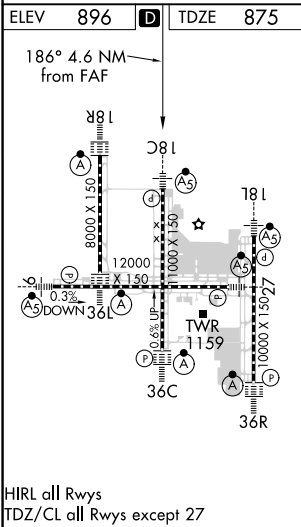
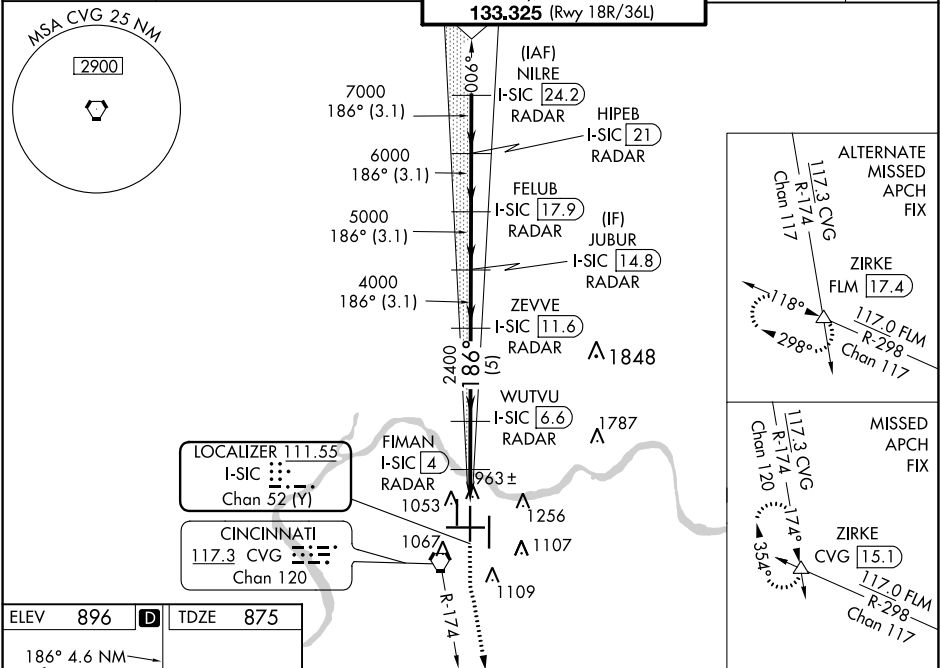


LOC/DME I-SIC 111.55 Chan 52 (Y)	APP CRS 186°	Rwy Idg TDZE 875 Apt Elev 896	ILS or LOC RWY 18C CINCINNATI/NORTHERN KENTUCKY INTL (CVG)
--	------------------------	---	---

RADAR required for procedure entry. DME or RADAR required.	MALSR 	MISSED APPROACH: Climb to 1500 then climbing left turn to 3000 on CVG R-174 to ZIRKE INT/CVG 15.1 DME and hold.
Simultaneous approach authorized.		

D-ATIS ARR 134.375 DEP 135.3	CINCINNATI APP CON 119.7 363.15 (090°-269°) 123.875 363.15 (270°-089°)	CINCINNATI TOWER 118.975 360.85 (Rwy 18L/36R) 118.3 (Rwys 18C/36C, 09/27) 133.325 (Rwy 18R/36L)	GND CON 121.7	CLNC DEL 127.175
---	--	---	-------------------------	----------------------------



VGSI and ILS glidepath not coincident (VGSI Angle 3.00/TCH 68).		1500	3000	ZIRKE
		↑	CVG R-174	△
		* LOC only		
8000 786° 7000 6000 5000 4000 2400 1560				
GS 3.00° TCH 55				
CATEGORY	A	B	C	D
S-ILS 18C	1075/18 200 (200-½)			
S-LOC 18C	1260/24 385 (400-½)		1260/35 385 (400-¾)	
CIRCLING	1460-1 564 (600-1)		1560-1¾ 664 (700-1¾) 1560-2 664 (700-2)	