

LOC/DME I-CIZ	APP CRS	Rwy Idg
110.15	184°	10000
Chan 38 (Y)		TDZE 889
		Apt Elev 896

ILS or LOC RWY 18L
CINCINNATI/NORTHERN KENTUCKY INTL (CVG)

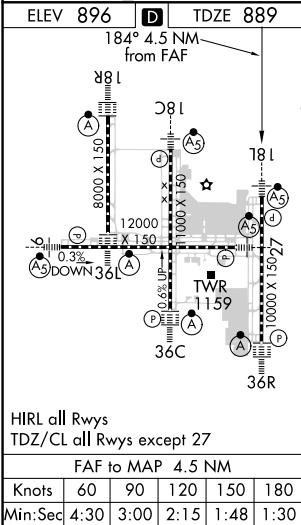
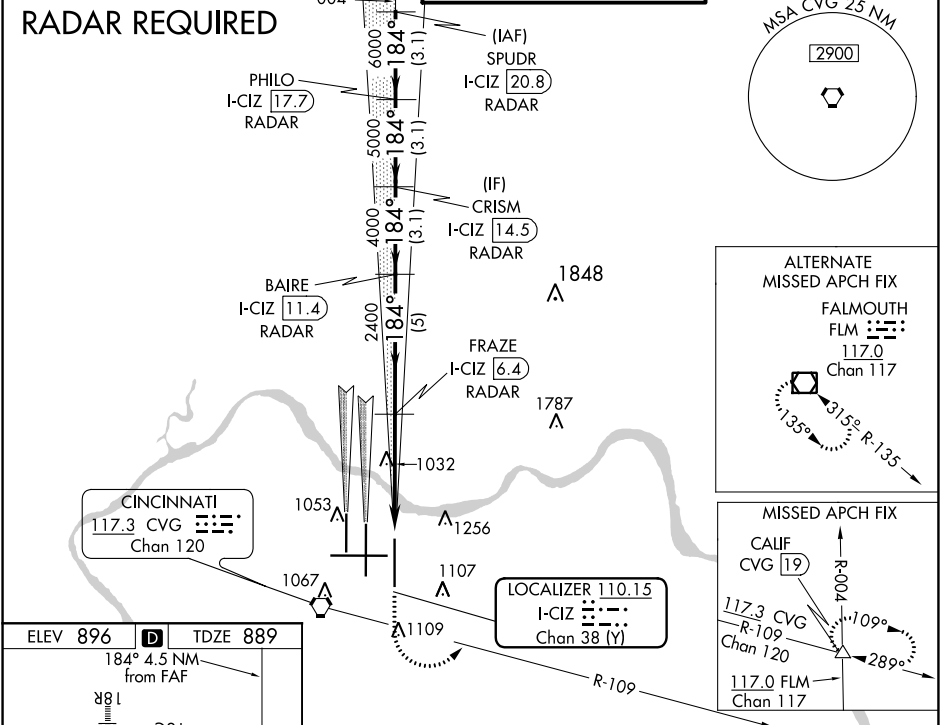
Simultaneous approach authorized with Rwy 18C and 18R.
DME or radar required. For inoperative MALSR, increase S-LOC 18L Cat C and D visibility to RVR 6000.

MALSR

MISSED APPROACH: Climb to 1500 then climbing left turn to 3000 via CVG R-109 to CALIF INT/CVG 19 DME and hold.

D-ATIS	CINCINNATI APP CON	CINCINNATI TOWER	GND CON	CLNC DEL
ARR 134.375 DEP 135.3	119.7 363.15 (090°-269°) 123.875 363.15 (270°-089°)	118.975 360.85 (RWY 18L/36R) 118.3 (RWYs 18C/36C, 09/27) 133.325 (RWY 18R/36L)	121.7	127.175

RADAR REQUIRED



VGSI and ILS glidepath not coincident (VGSI Angle 3.00/TCH 71).				
SPUDR I-CIZ [20.8] RADAR	PHILO I-CIZ [17.7] RADAR	CRISM I-CIZ [14.5] RADAR	BAIRE I-CIZ [11.4] RADAR	FRAZE I-CIZ [6.4] RADAR
7000	6000	5000	4000	2400
GS 3.00° TCH 55				
3.1 NM 3.1 NM 3.1 NM 5 NM 3.4 NM 1.1 NM				
CATEGORY	A	B	C	D
S-ILS 18L	1089/18 200 (200-½)			
S-LOC 18L	1300/24	411 (500-½)	1300/40	411 (500-¾)
CIRCLING	1460-1	564 (600-1)	1460-1½ 564 (600-1½)	1560-2 664 (700-2)

SE-1, 31 DEC 2020 to 28 JAN 2021

SE-1, 31 DEC 2020 to 28 JAN 2021