

LOC/DME I-CVG
109.9
Chan **36**

APP CRS
006°

Rwy Idg **11000**
TDZE **851**
Apt Elev **896**

ILS or LOC RWY 36C

CINCINNATI/NORTHERN KENTUCKY INTL (CVG)

Simultaneous approach authorized with Rwy 36L/R.
DME required.

ALSIF-2

MISSED APPROACH: Climb to 1500 then climbing left turn to 3000 via CVG R-010 to NEATS/CVG 18 DME and hold.

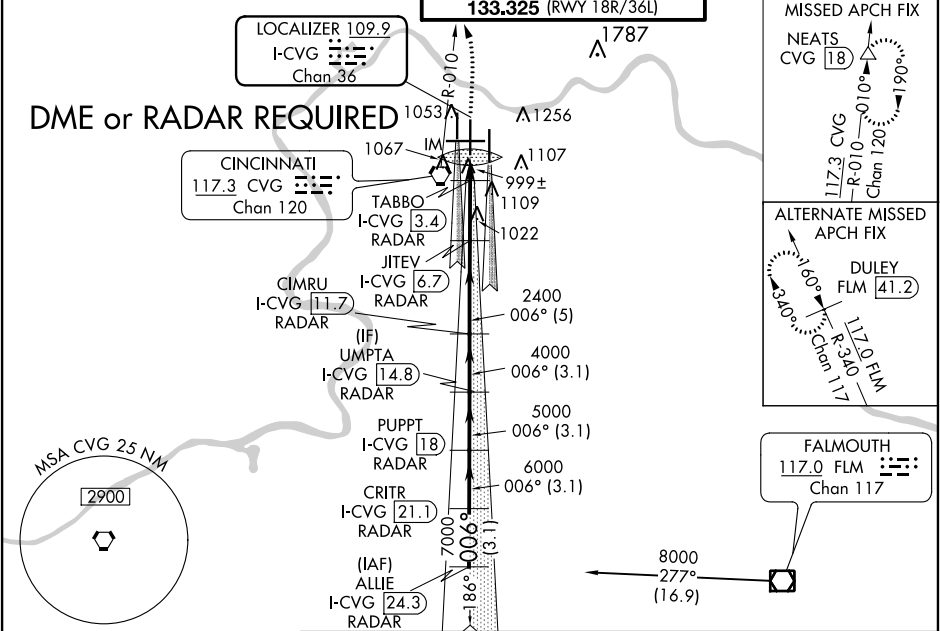
D-ATIS
ARR **134.375** DEP **135.3**

CINCINNATI APP CON
119.7 363.15 (090°-269°)
123.875 363.15 (270°-089°)

CINCINNATI TOWER
118.975 360.85 (RWY 18L/36R)
118.3 (RWYs 18C/36C, 09/27)
133.325 (RWY 18R/36L)

GND CON
121.7

CLNC DEL
127.175



ELEV 896 TDZE 851

TDZ/CL all Rwy's except 27
HIRL all Rwy's

FAF to MAP 4.7 NM

Knots	60	90	120	150	180
Min:Sec	4:42	3:08	2:21	1:53	1:34

1500 3000 NEATS

CVG R-010

VGSI and ILS glidepath not coincident (VGSI Angle 3.00/TCH 77).

CIMRU I-CVG 11.7 RADAR

PUPPT I-CVG 18 RADAR

CRITR I-CVG 21.1 RADAR

JITEV I-CVG 6.7 RADAR

TABBO I-CVG 3.4 RADAR

I-CVG 2 I-CVG 3.4 RADAR

IM

2400 2400

#1340

8000 7000 6000 5000 4000

006°

GS 3.00° TCH 52

Procedure Turn NA

CATEGORY	A	B	C	D
S-ILS 36C	1051/18 200 (200-½)			
S-LOC 36C	1340/24	489 (500-½)	1340/50	489 (500-1)
CIRCLING	1460-1	564 (600-1)	1460-1½ 564 (600-1½)	1560-2 664 (700-2)
TABBO FIX MINIMUMS				
S-LOC 36C	1260/24	409 (400-½)	1260/40	409 (400-¾)
CIRCLING	1460-1	564 (600-1)	1460-1½ 564 (600-1½)	1560-2 664 (700-2)