

LOC/DME I-EEI
110.35
Chan **40** (Y)

APP CRS
006°

Rwy Idg
TDZE **896**
Apt Elev **896**

ILS or LOC RWY 36R

CINCINNATI/NORTHERN KENTUCKY INTL (CVG)

Simultaneous approach authorized with Rwy 36C and 36L.
DME or radar required.

ALSF-2

MISSED APPROACH: Climb to 1500 then climbing right turn to 3000 via CVG R-059 to MOAKS Int/CVG 29 DME and hold.

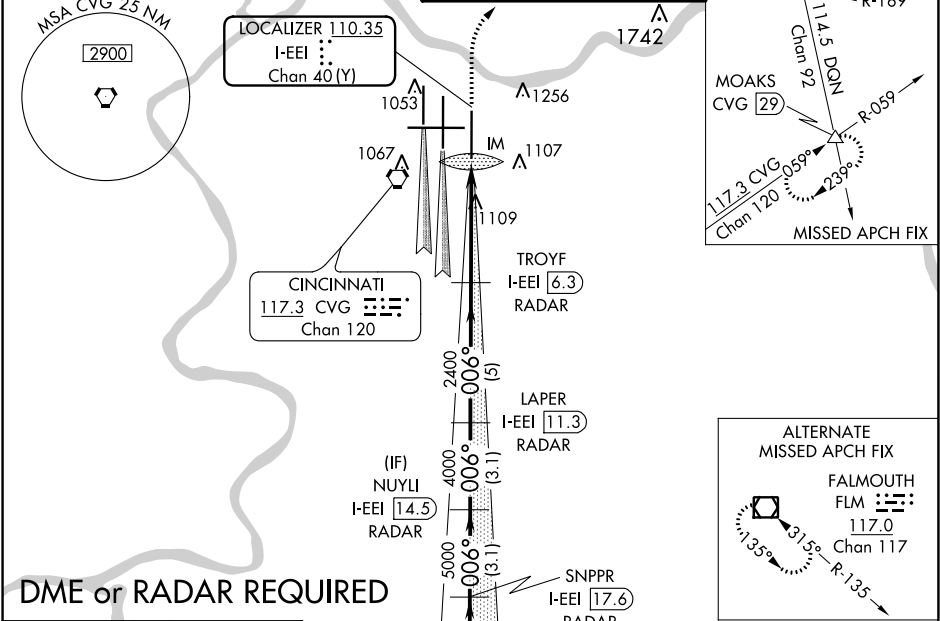
D-ATIS
ARR **134.375** DEP **135.3**

CINCINNATI APP CON
119.7 363.15 (090°-269°)
123.875 363.15 (270°-089°)

CINCINNATI TOWER
118.975 360.85 (RWY 18L/36R)
118.3 (RWYS 18C/36C, 09/27)
133.325 (RWY 18R/36L)

GND CON
121.7

CLNC DEL
127.175



ELEV 896 TDZE 896

TDZ/CL all
Rwys except 27 006° 4.5 NM from FAF
HIRL all Rwys

FAF to MAP 4.5 NM

Knots	60	90	120	150	180
Min:Sec	4:30	3:00	2:15	1:48	1:30

1500
3000
MOAKS
CVG R-059
7000 287° (16.3)
FALMOUTH 117.0 FLM Chan 117

VGSI and ILS glidepath not coincident (VGSI Angle 3.00°/TCH 70).
SNPPR I-EEI 17.6
NUYLI I-EEI 14.5
TROYF I-EEI 6.3
LAPER I-EEI 11.3
KYKAT I-EEI 20.8

Procedure Turn NA
GS 3.00°
TCH 55

CATEGORY	A	B	C	D
S-ILS 36R	1096/18		200 (200-1/2)	
S-LOC 36R	1360/24	464 (500-1/2)	1360/50	464 (500-1)
CIRCLING	1460-1	564 (600-1)	1460-1 1/2 564 (600-1 1/2)	1560-2 664 (700-2)

COVINGTON, KENTUCKY
Amdt 8B 31MAY12

CINCINNATI/NORTHERN KENTUCKY INTL (CVG)
39°03'N-84°40'W

ILS or LOC RWY 36R