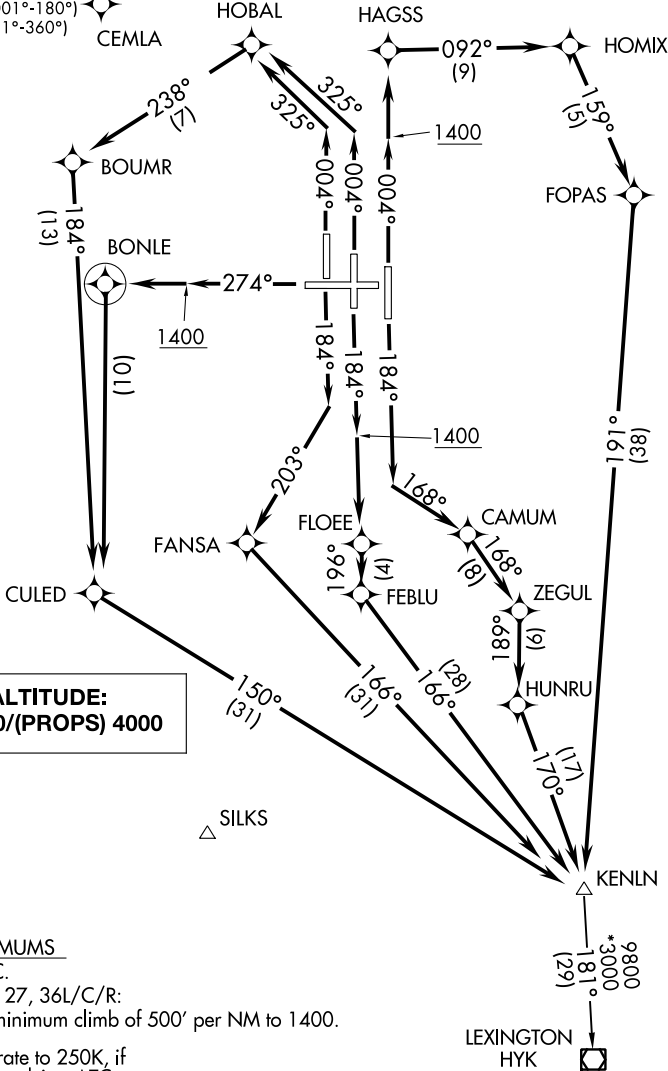


D-ATIS DEP 135.3
CLNC DEL
127.175
GND CON
121.7
CINCINNATI TOWER
118.3 360.85 (RWYS 18C/36C, 9/27)
118.975 360.85 (RWY 18L/36R)
133.325 360.85 (RWY 18R/36L)
CINCINNATI DEP CON
126.65 254.25 (001°-180°)
128.7 254.25 (181°-360°)

NOTE: If unable to accept climb rates, advise ATC on initial contact.
NOTE: DME/DME/IRU or GPS required.
NOTE: RADAR required.
NOTE: RNAV 1.
NOTE: Transponder code will be issued via PDC or Cincinnati CLNC DEL.



△ CHCLL

△ SILKS

TAKEOFF MINIMUMS
Rwy 9: NA-ATC.
Rwys 18L/C/R, 27, 36L/C/R:
Standard with minimum climb of 500' per NM to 1400.
NOTE: Accelerate to 250K, if unable, advise ATC.

NOTE: Chart not to scale. (NARRATIVE ON FOLLOWING PAGE)