

|                         |                        |                             |   |
|-------------------------|------------------------|-----------------------------|---|
| WAAS<br>CH <b>49099</b> | APP CRS<br><b>004°</b> | Rwy Idg<br>TDZE<br>Apt Elev | <b>8000</b><br><b>873</b><br><b>896</b> |
| <b>W36A</b>             |                        |                             |   |

RNAV (GPS) Y RWY 36L

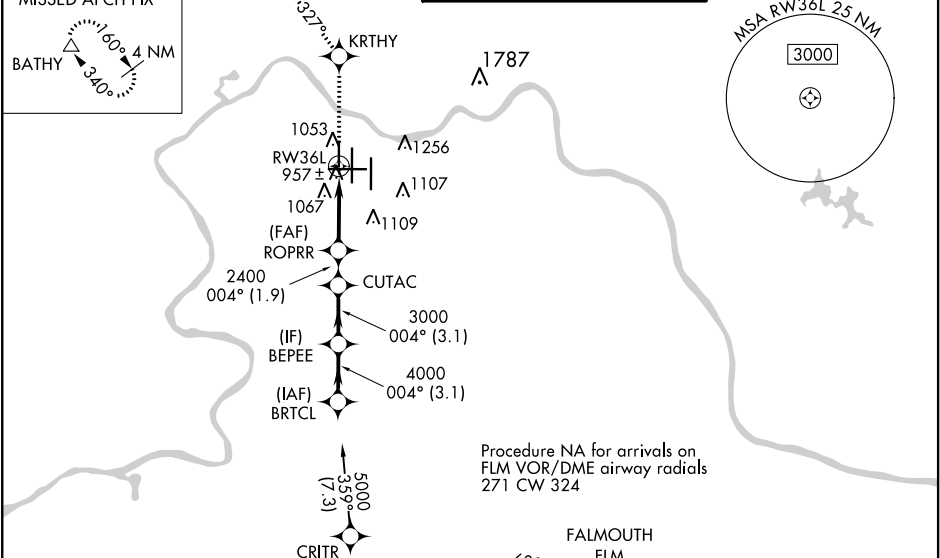
CINCINNATI/NORTHERN KENTUCKY INTL (CVG)

For uncompensated Baro-VNAV systems, LNAV/VNAV NA below -16°C (4°F) or above 47°C (116°F). DME/DME RNP-0.3 NA. Simultaneous approach authorized with Rwy 36C/R. LNAV procedure NA during simultaneous operations. Use of FD or AP providing RNAV track guidance required during simultaneous operations.

ALSF-2

MISSED APPROACH: Climb to 3000 direct KRTHY and on 327° track to BATHY and hold.

|   |  |   |                         |                            |
|---|--|---|-------------------------|----------------------------|
| D-ATIS<br>ARR <b>134.375</b> DEP <b>135.3</b> | CINCINNATI APP CON<br><b>119.7 363.15</b> (090°-269°)<br><b>123.875 363.15</b> (270°-089°) | CINCINNATI TOWER<br><b>118.975 360.85</b> (RWY 18L/36R)<br><b>118.3</b> (RWYS 18C/36C, 09/27)<br><b>133.325</b> (RWY 18R/36L) | GND CON<br><b>121.7</b> | CLNC DEL<br><b>127.175</b> |
|---|--|---|-------------------------|----------------------------|



ELEV 896 TDZE 873

Procedure Turn NA

GP 3.00° TCH 55

5000

004°

BEPEE

4000

CUTAC

3000

2400

ROPRR

2400

\*1.2 NM to RW36L

RW36L

3.1 NM

3.1 NM

1.9 NM

3.4 NM

1.2 NM

\* LNAV only.

| CATEGORY     | A       | B           | C                       | D                      |
|--------------|---------|-------------|-------------------------|------------------------|
| LPV DA       | 1073/18 |             | 200 (200-½)             |                        |
| LNAV/VNAV DA | 1383/60 |             | 510 (500-1¼)            |                        |
| LNAV MDA     | 1300/24 | 427 (500-½) | 1300/40<br>427 (500-¾)  | 1300/50<br>427 (500-1) |
| CIRCLING     | 1460-1  | 564 (600-1) | 1460-1½<br>564 (600-1½) | 1560-2<br>664 (700-2)  |

004° to RW36L

004°

18L

18C

18R

36L

36C

36R

TWR 1159

8000 X 150

12000 X 150

10000 X 150

HIRL all Rwy's

TDZ/CL all Rwy's except 27