
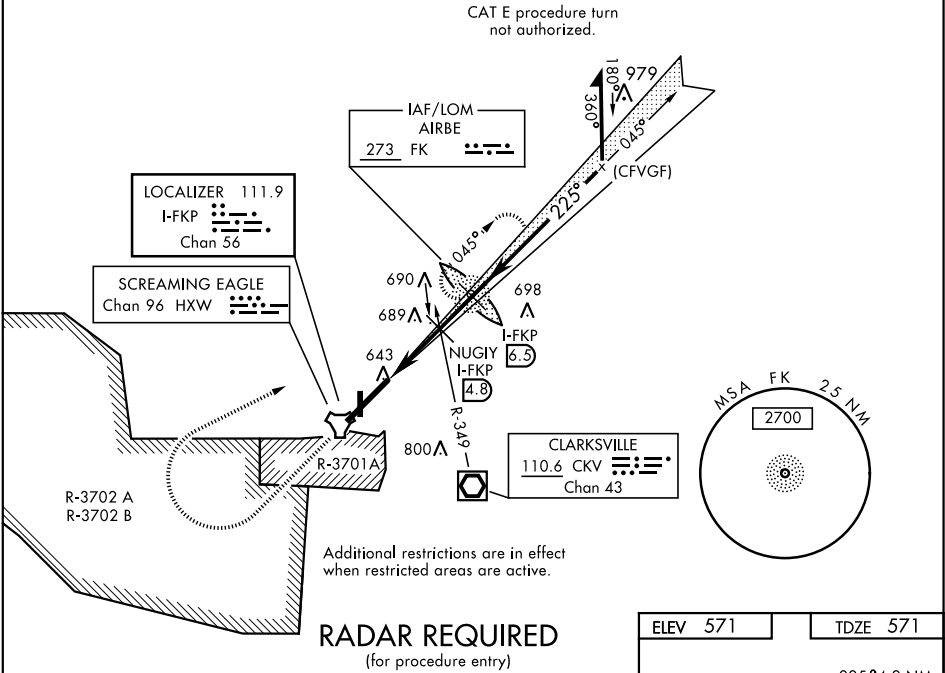


FORT CAMPBELL, KENTUCKY

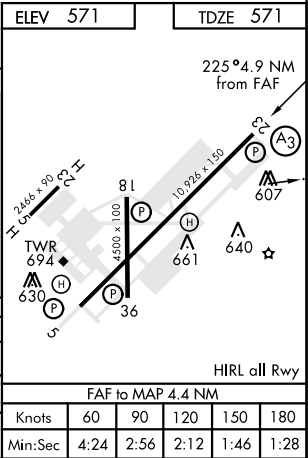
ILS or LOC RWY 23

LOC I-FKP <b>111.9</b> Chan <b>56</b>	APCH CRS <b>225°</b>	Rwy ldg <b>10,926</b> TDZE <b>571</b> Arpt Elev <b>571</b>	AL-679 [USA]	CAMPBELL AAF (KHOP)		
▼ *When ALS inop, increase CAT E RVR to 40. RVR 18 authorized with use of FD or AP or HUD to DA.			SSALR 	MISSED APPROACH: Climb to 1200 then climbing right turn to 2500 direct AIRBE LOM/I-FKP 6.5 DME, continue climb-in-hold to 2500.		
ATIS <b>125.175 308.4</b>	CAMPBELL APP CON <b>118.1 269.525</b>	CAMPBELL TOWER <b>120.9 278.8</b>	GND CON <b>121.8 266.8</b>	CLNC DEL <b>138.8</b>	ASR/PAR	

**\*\* When ALS inop, increase CAT CDE RVR to 55.**  
**\*\*\* Circling not authorized SE of Rwy 5-23.**



1200	2500	AIRBE	I-FKP 6.5	AIRBE LOM I-FKP 6.5	Remain within 10 NM
↑	↪	●	●	●	
↑ LOC only					
I-FKP DME	I-FKP 2.1	I-FKP 3.1	I-FKP 4.8	NUGUY I-FKP 4.8	
GS 3.00° TCH 57	2.7 NM	1.7 NM	1480	2200	2500
VGSI and ILS glidepath not coincident.					
CATEGORY	A	B	C	D	E
S-ILS 23 *	771/24		200	(200-½)	
S-LOC 23**	940/24	369 (400-½)	940/40	369 (400-¾)	
***	1060-1	489 (500-1)	1060-1½	489 (500-1½)	1140-2 569 (600-2)
CIRCLING					



ILS or LOC RWY 23

SE-1, 31 DEC 2020 to 28 JAN 2021

SE-1, 31 DEC 2020 to 28 JAN 2021