
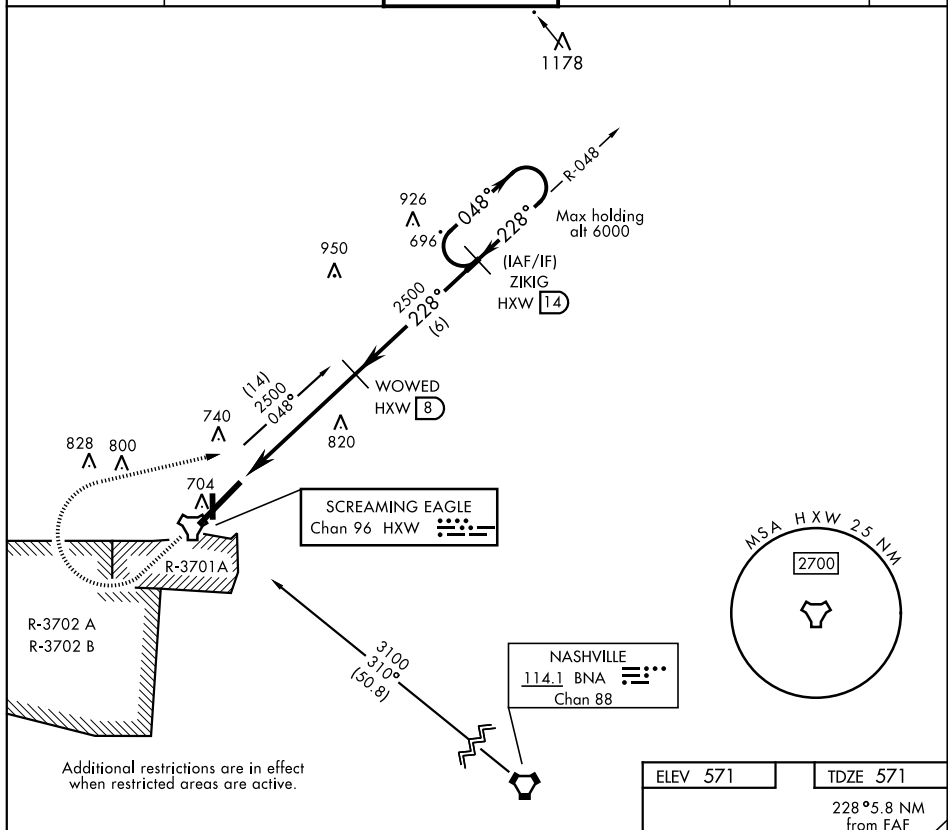


TACAN RWY 23

TACAN HWX Chan 96	APCH CRS 228°	Rwy Idg 10,926 TDZE 571 Arpt Elev 571	AL-679 [USA]		CAMPBELL AAF (KHOP)	
▼ * When ALS inop, increase CAT CDE vis to 1%. ** Circling NA SE of Rwy 5-23.			SSALR 	MISSED APPROACH: Climb to 1200 then climbing right turn to 2500 on hdg 078° and HWX TACAN R-048 to ZIKIG/HWX 14 DME and hold.		
ATIS 125.175 308.4	CAMPBELL APP CON 118.1 269.525		CAMPBELL TOWER 120.9 278.8		GND CON 121.8 266.8	CLNC DEL 138.8 ASR/PAR



1200 2500 HXW R-048 VGS and descent angles not coincident.

↑ hdg 078°

TACAN VAYUY 2.2 3.6 5.8 NM

WOWED 8 2500

ZIKIG 14 048 228 2500

228° 3.07° TCH 55

CATEGORY	A	B	C	D	E
S-23 *	1080/24	509 (600-¾)	1080/55	509 (600-1¼)	
C CIRCLING **	1080-1	509 (600-1)	1080-1½ 509 (600-1½)	1140-2	569 (600-2)

ELEV 571 **TDZE 571**

228° 5.8 NM from FAF

2466 ft x 20

TWR 694

630

607

661

640

36

8 l

4500 x 100

10,926 x 150

HIRL all Rwy