

WAAS CH 70401 W04A	APP CRS 046°	Rwy Idg TDZE 969 Apt Elev 979	6604 969 979
----------------------------------------	------------------------	---------------------------------------------------	-----------------------------------------

RNAV (GPS) RWY 4
BLUE GRASS (LEX)

RNP APCH.

▼

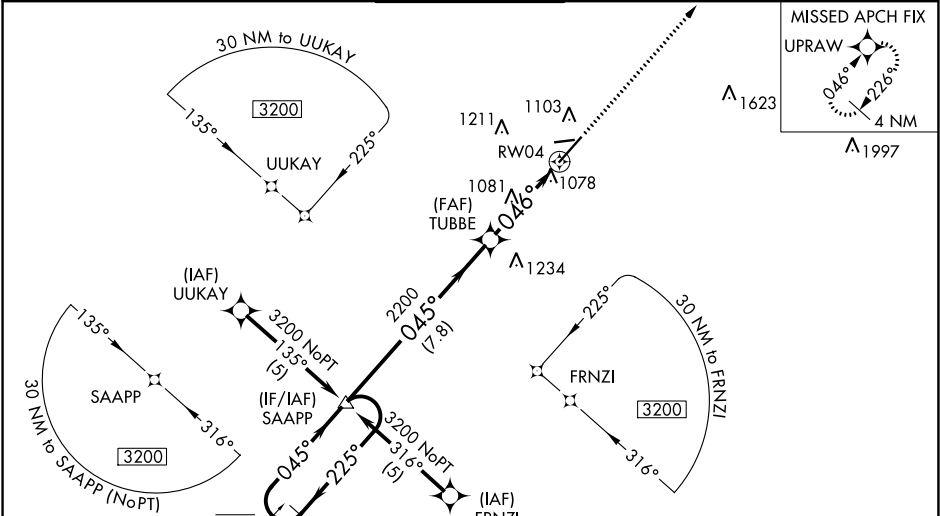
⚠

For uncompensated Baro-VNAV systems, LNAV/VNAV NA below -16°C or above 54°C.
For inop ALS, increase LPV all Cats visibility to RVR 4500, LNAV/VNAV all Cats visibility to RVR 6000, and LNAV all Cats visibility to RVR 5500. For inop ALS when using Frankfort altimeter setting, increase LNAV Cat A/B visibility to RVR 5500. When local altimeter setting not received, use Frankfort altimeter setting and increase LPV DA to 1336 feet, LNAV/VNAV DA to 1424 feet, and all MDA 80 feet, increase LNAV Cat C visibility to RVR 4500, and Circling Cat C/D visibility ¼ SM.
Baro-VNAV and VDP NA when using Frankfort altimeter setting.

MALSR

MISSED APPROACH:
Climb to 3200 direct
UPRAW and hold.

ATIS 126.3	LEXINGTON APP CON 120.15 259.3	LEXINGTON TOWER 119.1 257.8	GND CON 121.9	CLNC DEL 132.35
----------------------	------------------------------------------	---------------------------------------	-------------------------	---------------------------



NoPT for arrival at SAAPP on V171-178 eastbound.

4 NM Holding Pattern

SAAPP

6000
3200

225°
045°

TUBBE

2200

*1.1 NM to RW04

RW04

*LNAV only.

GP 3.00°
TCH 60

7.8 NM

2.6 NM

1.1 NM

CATEGORY	A	B	C	D
LPV DA	1274/40		305 (300-¾)	
LNAV/VNAV DA	1362/50		393 (400-1)	
LNAV MDA	1340/40		371 (400-¾)	
CIRCLING	1420-1½ 441 (500-1½)	1440-1½ 461 (500-1½)	1520-1½ 541 (600-1½)	1600-2 621 (700-2)

ELEV 979

D

TDZE 969

1037±

4000 X 75

27

TWR

1091

0.6% UP

0.5% UP

0.46° to RW04

TDZ/CL Rwy 4
REIL Rwy 9, 22 and 27
HIRL Rwy 4-22
MIRL Rwy 9-27

SE-1, 31 DEC 2020 to 28 JAN 2021

SE-1, 31 DEC 2020 to 28 JAN 2021