

RNAV (GPS) RWY 6

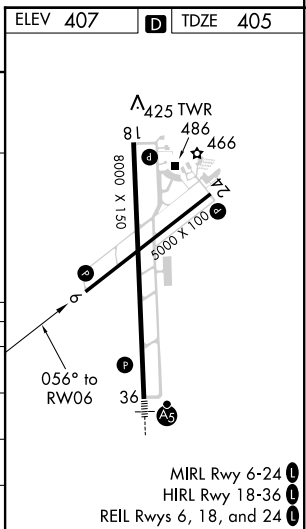
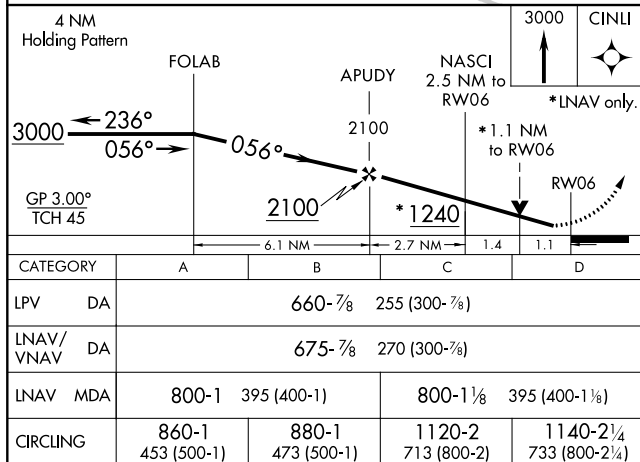
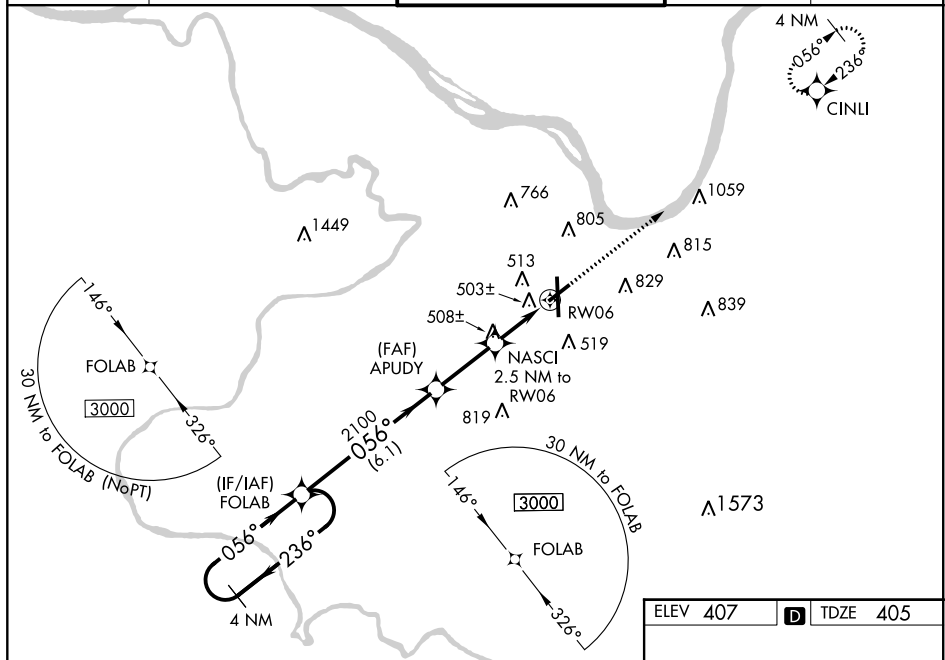
OWENSBORO-DAVIESS COUNTY RGNL (OWB)

| | | |
|--|------------------------|---|
| WAAS CH 40430 W06A | APP CRS 056° | Rwy Idg 5000 TDZE 405 Apt Elev 407 |
|--|------------------------|---|

⚠ For uncompensated Baro-VNAV systems, LNAV/VNAV NA below -15°C (5°F) or above 54°C (130°F), DME/DME RNP-0.3 NA, Rwy 6 helicopter visibility reduction below ¼ SM NA. When local altimeter setting not received, use Evansville altimeter setting: increase LPV DA to 719 feet and all Cats visibility ½ mile; increase LNAV/VNAV DA to 734 feet and all Cats visibility ½ mile; increase all MDA 60 feet and LNAV Cats C/D and Circling Cats C/D visibility ½ mile. Baro-VNAV and VDP NA when using Evansville altimeter setting.

MISSED APPROACH:
Climb to 3000 direct
CINLI and hold.

| | | | | |
|---------------------|---------------------------------------|--|------------------|------------------|
| AWOS-3PT 119.025 | EVANSVILLE APP CON ★ 124.025 290.9 | OWENSBORO TOWER ★ 120.7 (CTAF) 0 251.15 | GND CON 121.7 | UNICOM 122.95 |
|---------------------|---------------------------------------|--|------------------|------------------|



OWENSBORO, KENTUCKY

Amdt 1A 29MAR18

OWENSBORO-DAVIESS COUNTY RGNI (OWB)

37°44'N-87°10'W

RNAV (GPS) RWY 6

MIRL Rwy 6-24 **L**
HIRL Rwy 18-36 **L**
REIL Rwy 6, 18, and 24 **L**

SE-1, 31 DEC 2020 to 28 JAN 2021